

Catalog CA.MTR.01
Inverter Duty Motors
Revision Date: 01/05/04

YASKAWA

This page left intentionally blank.

Table of Contents

	Page
Motors	
Open Dripproof (ODP)	3
Four-in-One (4-in-1)	6
Totally Enclosed, Fan Cooled (TEFC)	7
Severe Duty (SD)	10
Explosion Proof (XP)	12
Washdown	13
microMAX™	14
Black MAX® (Standard)	15
Black MAX® (Explosion Proof)	16
Blue MAX® (Standard)	17
Blue MAX® (Explosion Proof)	19
Blue MAX® (Brake Motor)	20
Blue MAX® (Modified)	21
Options	
Encoders	23
Encoder Cables	23
Slide Bases	23
Replacement Blower Motors	23
Dimension Drawings	24
Performance Data	32
Warranty Policy	35

This page intentionally left blank

List Prices

Open Dripproof (ODP)

1-500HP; 1200, 1800 & 3600 RPM



- Variable Torque and 2:1 Constant Torque
- 1.0 Service Factor on VFD
- Rolled Steel Construction (except as noted)
- Ball bearings (except as noted)
- Foot-mounted (except as noted)
- Class B insulation (except as noted)
- UL Recognized and CSA Certified (except as noted)
- One year warranty (3 year for Premium Efficiency)

HP	RPM	Voltage	NEMA Frame	Full Load Amps	Full Load Efficiency	Approx. Shipping Weight	Model Number	List Price \$	Notes
1	1800	208-230/460	143T	3.3-3.1/1.55	82.5	34	MTRE715		CB,F1
	1800	208-230/460	143T	3.2/1.6	85.5	35	MTRU758		PE3,A,F,F1
	1800	575	143T	1.1	82.5	41	MTRE912		CB,F1
	1200	230/460	145T	3.6/1.8	80.0	47	MTRE728		CB,F1
1.5	3600	208-230/460	143T	4.8-4.8/2.4	82.5	28	MTRE783		CB,F1
	1800	208-230/460	145T	4.6-4.4/2.2	84.0	40	MTRE716		CB,F1
	1800	208-230/460	145T	4.8/2.4	86.5	35	MTRU759		PE3,A,F,F1
	1800	575	145T	1.8	84.0	39	MTRE913		CB,F1
	1200	230/460	182T	4.8/2.4	84.0	74	MTRE729		F1,CF
2	3600	208-230/460	145T	5.9-5.9/2.95	84.0	29	MTRE702		CB,F1
	1800	208-230/460	145T	6.2-5.8/2.9	84.0	43	MTRE717		CB,F1
	1800	208-230/460	145T	5.8/2.9	86.5	37	MTRU760		PE3,F,F1
	1800	575	145T	2.3	84.0	42	MTRE914		CB,F1
	1200	230/460	184T	6.2/3.1	85.5	87	MTRE730		F1,CF
3	3600	208-230/460	145T	8.9-8.4/4.2	84.0	34	MTRE784		CB,F1
	1800	208-230/460	182T	8.4-7.8/3.9	86.5	81	MTRE718		F1
	1800	208-230/460	182T	8.4-7.8/3.9	89.5	76	MTRE930		PE,F1,CF
	1800	575	182T	3.7	86.5	72	MTRE915		F1,CF
	1200	230/460	213T	8.4/4.2	86.5	104	MTRE731		
5	3600	208-230/460	182T	13.6-12.0/6.0	86.5	74	MTRE704		F1,CF
	1800	208-230/460	184T	13.6-12.4/6.2	87.5	89	MTRE719		F1
	1800	208-230/460	184T	13.8-12.6/6.3	89.5	89	MTRE931		PE,F1,CF
	1800	575	184T	5.3	87.5	89	MTRE916		F1,CF
	1200	230/460	215T	14.8/7.4	87.5	135	MTRE732		
7 1/2	3600	208-230/460	184T	20.0-18.0/9.0	87.5	70	MTRE705		F1,CF
	1800	208-230/460	213T	21.4-19.6/9.8	88.5	125	MTRE720		F1,CF
	1800	208-230/460	213T	20.6-19.8/9.9	91.0	160	MTRU763		PE3,F,R,CI
	1800	575	213T	7.7	88.5	113	MTRE758		F1
	1200	230/460	254T	21.4/10.7	88.5	150	MTRE733		
10	3600	208-230/460	213T	25.9-23.4/11.7	88.5	111	MTRE706		F1
	3600	208-230/460	215T	25.0-23.6/11.8	90.2	150	MTRU764		PE3,F,F1,R,CI
	1800	208-230/460	215T	28.6-26.4/13.2	89.5	136	MTRE721		F1,CF
	1800	208-230/460	215T	28.5-25.6/12.8	91.7	220	MTRU765		PE3,F,R,CI
	1800	575	215T	10.0	89.5	123	MTRE759		F1
	1200	230/460	256T	28.0/14.0	90.2	221	MTRE734		

NOTES:

- | | | | |
|----|--|-----|--|
| A | NEMA Design A | PE3 | Premium Efficiency (includes 3 N/C Thermostats) |
| CB | 56H,143T,& 145T Combination Base w/ 12 mtg holes | PE | Premium Efficiency |
| CF | Motor will NOT accept C Face Kit | PW | Capable of part winding start |
| CI | Cast iron construction (all others are rolled steel) | R | Not UL Recognized |
| F | Class F Insulation | RB | Roller Bearing on shaft end for belted loads only |
| F1 | F1 Mounting Only, Cannot reassemble to F2 | YD | 12 Leads for Wye-Delta, Part Winding Start on low voltage, or across-the-line starting |



List Prices

Open Dripproof (ODP) (continued)

1-500HP; 1200, 1800 & 3600 RPM

- Variable Torque and 2:1 Constant Torque
- 1.0 Service Factor on VFD
- Rolled Steel Construction (except as noted)
- Ball bearings (except as noted)
- Foot-mounted (except as noted)
- Class B insulation (except as noted)
- UL Recognized and CSA Certified (except as noted)
- One year warranty (3 year for Premium Efficiency)

HP	RPM	Voltage	NEMA Frame	Full Load Amps	Full Load Efficiency	Approx. Shipping Weight (lbs.)	Model Number	List Price \$	Notes
15	3600	208-230/460	215T	37.6-34.0/17.0	90.2	120	MTRE707		F1
	3600	208-230/460	215T	38.0-34.6/17.3	91.0	184	MTRU766		PE3,F,F1,UL,CI
	1800	208-230/460	254T	42.0-39.0/19.5	91.0	248	MTRE722		CI
	1800	208-230/460	254T	40.0-37.0/18.5	93.0	310	MTRU767		PE3,A,F,UL,CI
	1800	575	254T	15.4	91.0	184	MTRE760		
	1200	230/460	284T	39.0/19.5	90.2	328	MTRE735		
20	3600	230/460	254T	46.2/23.1	91.0	164	MTRE708		
	3600	208-230/460	254T	50.0-46.0/23.0	91.7	300	MTRU768		PE3,F,F1,UL,CI
	1800	208-230/460	256T	55.0-50.0/25.0	91.0	282	MTRE723		
	1800	208-230/460	256T	54.0-48.0/24.0	93.0	360	MTRU769		PE3,A,F,UL,CI
	1800	575	256T	20.8	91.0	189	MTRE761		
	1200	230/460	286T	53.0/26.5	91.0	483	MTRE736		CI
25	3600	230/460	256T	58.0/29.0	91.0	175	MTRE709		
	3600	208-230/460	256T	64.0-57.4/28.1	93.0	315	MTRU770		PE3,F,F1,UL,CI
	1800	208-230/460	284T	66.0-60.0/30.0	92.4	346	MTRE724		CI
	1800	208-230/460	256T	66.0-59.6/29.8	93.6	424	MTRU771		PE3,F,UL,CI
	1800	575	256T	24.5	91.7	351	MTRE762		CI
	1200	230/460	324T	66.0/33.0	91.7	480	MTRE737		CI
30	3600	230/460	284TS	72.0/36.0	91.0	286	MTRE710		CI
	3600	208-230/460	284TS	75.0-67.0/33.5	93.6	396	MTRU772		PE3,F,UL,CI
	1800	208-230/460	286T	80.0-70.0/35.0	92.4	411	MTRE725		CI
	1800	208-230/460	286T	78.0-71.0/35.5	94.1	483	MTRU773		PE3,A,F,UL,CI
	1800	575	286T	29.4	92.4	285	MTRE763		CI
	1200	230/460	326T	82.0/41.0	92.4	634	MTRE738		CI
40	3600	230/460	286TS	94.0/47.0	91.7	321	MTRE711		CI
	3600	208-230/460	286TS	100-91.2/45.6	93.6	452	MTRU774		PE3,A,F,UL,CI
	1800	230/460	324T	93.0/46.5	93.0	336	MTRE726		CI
	1800	230/460	324TS	97.0/48.5	93.0	340	MTRE789		CI
	1800	208-230/460	324T	104-96.0/48.0	94.1	581	MTRU775		PE3,F,UL,CI
	1800	575	324T	39	93.0	474	MTRE764		CI
50	1200	230/460	364T	104/52.0	93.0	688	MTRE746		CI
	3600	230/460	324TS	117/58.5	92.4	437	MTRE712		CI
	3600	208-230/460	324TS	123-112/56.0	93.6	548	MTRU776		PE3,F,UL,CI
	1800	230/460	326T	118/59.0	93.0	510	MTRE727		CI
	1800	230/460	326TS	119/59.5	93.0	510	MTRE791		CI
	1800	208-230/460	326T	129-118/59.0	94.5	710	MTRU777		PE3,F,UL,CI
	1800	575	326T	47.5	93.0	510	MTRE765		CI
	1200	230/460	365T	124/62.0	93.0	743	MTRE747		CI

NOTES:

- | | | | |
|----|--|-----|--|
| A | NEMA Design A | PE3 | Premium Efficiency (includes 3 N/C Thermostats) |
| CB | 56H,143T,& 145T Combination Base w/ 12 mtg holes | PE | Premium Efficiency |
| CF | Motor will NOT accept C Face Kit | PW | Capable of part winding start |
| CI | Cast iron construction (all others are rolled steel) | R | Not UL Recognized |
| F | Class F Insulation | RB | Roller Bearing on shaft end for belted loads only |
| F1 | F1 Mounting Only, Cannot reassemble to F2 | YD | 12 Leads for Wye-Delta, Part Winding Start on low voltage, or across-the-line starting |

List Prices

Open Dripproof (ODP) (continued)

1-500HP; 1200, 1800 & 3600 RPM



- Variable Torque and 2:1 Constant Torque
- 1.0 Service Factor on VFD
- Rolled Steel Construction (except as noted)
- Ball bearings (except as noted)
- Foot-mounted (except as noted)
- Class B insulation (except as noted)
- UL Recognized and CSA Certified (except as noted)
- One year warranty (3 year for Premium Efficiency)

HP	RPM	Voltage	NEMA Frame	Full Load Amps	Full Load Efficiency	Approx. Shipping Weight (lbs.)	Model Number	List Price \$	Notes
60	3600	230/460	326TS	136/68.0	93.0	454	MTRE713		CI
	3600	208-230/460	326TS	148-136/68.0	94.1	590	MTRU778		PE3,A,F,UL,CI
	1800	230/460	364T	142/71.0	93.6	751	MTRE739		CI
	1800	230/460	364TS	142/71.0	93.6	750	MTRE768		CI
	1800	208-230/460	364T	152-157/62.5	94.1	716	MTRU779		PE3,F,UL,CI
	1200	230/460	404T	143/72.0	93.6	1135	MTRE748		CI
75	3600	230/460	364TS	183/91.5	93.0	710	MTRE714		CI
	3600	208-230/460	364TS	193-176/88.0	94.5	850	MTRU782		PE,A,F,UL,CI
	1800	230/460	365T	176/88.0	94.1	820	MTRE740		CI
	1800	230/460	365TS	176/88.0	94.1	779	MTRE782		CI
	1800	230/460	365T	177/98.0	95.0	809	MTRE921		PE,YD,CI
	1800	208-230/460	365T	190-172/86	94.1	856	MTRU783		F,PE
100	3600	230/460	365TS	240/120	93.0	736	MTRE753		CI
	1800	230/460	404T	236/118	94.1	1040	MTRE741		CI
	1800	230/460	404TS	236/118	94.1	1013	MTRE780		CI
	1800	230/460	404T	226/113	95.4	1017	MTRE922		PE,YD,CI
125	3600	460	404TS	142	93.6	975	MTRE754		PW,CI
	1800	460	405T	147	94.5	1112	MTRE742		PW,CI
	1800	460	405TS	147	94.5	1068	MTRE781		PW,CI
	1800	460	405T	141	95.4	1102	MTRE923		PE,YD,CI
150	3600	460	405TS	169	93.6	1028	MTRE755		PW,CI
	1800	460	444T	176	95.0	1335	MTRE743		PW,CI
	1800	460	444TS	176	95.0	1276	MTRE792		PW,CI
	1800	460	444T	170	95.8	1312	MTRE924		PE,YD,CI
200	3600	460	444TS	225	94.5	1338	MTRE756		PW,CI
	1800	460	445T	233	95.0	1450	MTRE744		PW,RB,CI
	1800	460	445TS	233	95.0	1405	MTRU400		PW,CI
	1800	460	445T	225	95.8	1465	MTRE925		PE,YD,CI
250	3600	460	445TS	279	94.5	1406	MTRE757		PW,CI
	1800	460	445T	287	95.0	1410	MTRH149		PW,RB,CI
	1800	460	445TS	287	95.0	1465	MTRH192		CI
300	3600	460	447TS	335	94.5	2255	MTRH178		F,YD,CF,CI
	1800	460	447TS	345	95.4	1952	MTRH812		F,YD,CF,CI
350	3600	460	447TS	385	95.4	2068	MTRH193		F,YD,CF,CI
	1800	460	447TS	405	95.8	2064	MTRH813		F,YD,CF,CI
400	3600	460	447TS	440	95.4	2150	MTRH817		F,YD,CF,CI
	1800	460	447TS	454	95.8	2214	MTRH814		F,YD,CF,CI
450	3600	460	449TS	495	95.8	2544	MTRH818		F,YD,CF,CI
	1800	460	449TS	510	95.4	2554	MTRH815		F,YD,CF,CI
500	3600	460	449TS	545	95.8	2542	MTRH819		F,YD,CF,CI
	1800	460	449TS	560	95.8	2695	MTRH816		F,YD,CF,CI

NOTES:

- | | | | |
|----|--|-----|--|
| A | NEMA Design A | PE3 | Premium Efficiency (includes 3 N/C Thermostats) |
| CB | 56H,143T,& 145T Combination Base w/ 12 mtg holes | PE | Premium Efficiency |
| CF | Motor will NOT accept C Face Kit | PW | Capable of part winding start |
| CI | Cast iron construction (all others are rolled steel) | R | Not UL Recognized |
| F | Class F Insulation | RB | Roller Bearing on shaft end for belted loads only |
| F1 | F1 Mounting Only, Cannot reassemble to F2 | YD | 12 Leads for Wye-Delta, Part Winding Start on low voltage, or across-the-line starting |



List Prices

Four-in-One

1/4-10HP; 1200, 1800 & 3600 RPM

- Variable Torque; Constant Torque speed range as noted
- 1.0 Service Factor on VFD
- Totally Enclosed, Fan Cooled w/ C-Face (except as noted)
- Foot-mounted; bolt-on removable base (except as noted)
- CR²⁰⁰ Corona Resistant, 200C rated magnet wire
- Nameplated 60/50Hz, 190/380V, at next lower HP
- Class F insulation
- Heavy gauge steel frame
- Horizontal or vertical mounting
- Ball bearings
- UL Recognized and CSA Certified
- One year warranty

HP	RPM	Voltage	NEMA Frame	Full Load Amps	CT Speed Range	Approx. Shipping Weight (lbs.)	Model Number	List Price \$	Notes
1/4	1200	208-230/460	56C	1.7-2.0/1.0	2:1	20	MTRG586		
	3600	208-230/460	56C	1.7-1.8/0.9	1000:1	21	MTRD390		N
1/3	1800	208-230/460	56C	1.5-1.6/0.8	1000:1	20	MTRG580		N
	1200	208-230/460	56C	1.9-2.2/1.1	10:1	23	MTRG587		
	3600	208-230/460	56C	2.1-2.2/1.1	10:1	22	MTRD391		
1/2	1800	208-230/460	56C	2.3-2.4/1.2	10:1	23	MTRG581		
	1200	208-230/460	56C	2.4-2.7/1.3	10:1	24	MTRG588		
	3600	208-230/460	56C	3.0-3.2/1.6	4:1	23	MTRD392		
3/4	1800	208-230/460	56C	2.9-3.0/1.5	10:1	25	MTRG582		
	1200	208-230/460	56C	3.1-3.2/1.6	4:1	28	MTRG589		
	3600	208-230/460	56C	3.7-3.7/1.8	4:1	25	MTRD393		
1	1800	208-230/460	56HC	3.5-3.6/1.8	10:1	28	MTRG583		CB
	1200	208-230/460	56HC	3.95-4.0/2.0	4:1	33	MTRK701		CB
	3600	208-230/460	56C	4.7-4.6/2.3	2:1	26	MTRD394		
1.5	1800	208-230/460	56HC	4.8-4.8/2.4	2:1	30	MTRG584		CB
	3600	230/460	56HC	6.6/3.3	2:1	30	MTRD395		CB
2	1800	208-230/460	56HC	6.0-5.8/2.9	4:1	41	MTRG585		CB
	1200	230/460	184TC	6.0/3.0	10:1	72	MTRC380		CI
	3600	208-230/460	56HC	8.4-7.6/3.8	2:1	41	MTRD396		CB
3	3600	208-230/460	182TC	8.2-7.4/3.7	10:1	76	MTRC381		CI
	1800	230/460	56HCZ	8.6/4.3	2:1	48	MTRG590		Z, CB
	1800	208-230/460	182TC	9.0-8.4/4.2	10:1	77	MTRC382		CI
	1200	208-230/460	213TC	9.6-9.2/4.6	10:1	106	MTRC384		CI
	3600	208-230/460	184TC	13.5-12.5/6.2	10:1	81	MTRC385		CI
5	1800	230/460	184TC	13.0/6.5	10:1	87	MTRC386		CI
	1200	208-230/460	215TC	15.0-14.0/7.0	10:1	143	MTRC388		CI
	3600	208-230/460	213TC	20.0-18.5/9.2	10:1	114	MTRC389		CI
7.5	1800	208-230/460	213TC	21.5-20.0/10.0	10:1	122	MTRC390		CI
	3600	208-230/460	215TC	27.0-24.0/12.0	10:1	128	MTRC392		CI
10	1800	208-230/460	215TC	28.0-26.0/13.0	10:1	135	MTRC393		CI

NOTES:

- N Totally Enclosed Non Ventilated
- Z 56HZ with 7/8" shaft diameter, 3 1/2" shaft height, and slotted 56 Frame base
- CB 56H, 143T, and 145T, combination base with 12 mounting holes

List Prices

Totally Enclosed, Fan Cooled (TEFC)

1-450HP; 1200, 1800 & 3600 RPM



- Variable Torque and 10:1 Constant Torque (except as noted)
- 1.0 Service Factor on VFD
- Rolled Steel Construction (except as noted)
- UL Recognized and CSA Certified (except as noted)
- Foot-mounted (except as noted)
- Class F insulation (except as noted)
- Ball bearings (except as noted)
- One year warranty (3 year for Premium Efficiency)

HP	RPM	Voltage	NEMA Frame	Full Load Amps	Full Load Efficiency	Approx. Shipping Weight (lbs.)	Model Number	List Price \$	Notes
1	1800	208-230/460	143T	3.2-3.0/1.5	82.5	38	MTRE950		N,CI PE,N,CI CB
	1800	208-230/460	143T	3.2-3.0/1.5	85.5	51	MTRE826		
	1800	230/460	143T	3.0/1.5	85.5	53	MTRE349		
	1800	575	56	1.5	77.0	27	MTRG348		
	1800	575	143T	1.3	82.5	38	MTRE827		
	1200	208-230/460	56H	4.0-4.0/2.0	77.0	35	MTRG360		
	1200	230/460	145T	3.4/1.7	80.0	39	MTRE979		
1 1/2	3600	208-230/460	143T	4.4-4.0/2.0	82.5	34	MTRE832		PE,N,CI
	1800	230/460	143T	4.4/2.2	84.0	63	MTRE352		
	1800	208-230/460	145T	4.6-4.0/2.2	84.0	45	MTRE951		
	1800	575	145T	1.7	84.0	45	MTRE838		
	1200	230/460	182T	4.4/2.2	85.5	64	MTRE982		
2	3600	208-230/460	145T	5.7-5.2/2.6	84.0	35	MTRE994		PE, N,CI
	1800	230/460	143T	8.0/4.0	85.5	64	MTRE354		
	1800	208-230/460	145T	6.4-6.0/3.0	85.5	42	MTRE952		
	1800	575	145T	2.4	85.5	42	MTRE847		
	1200	230/460	184T	6.0/3.0	86.5	72	MTRE995		
3	3600	208-230/460	182T	8.2-7.4/3.7	85.5	69	MTRE967		PE, N,CI
	1800	230/460	182T	8.0/4.0	90.2	102	MTRE201		
	1800	208-230/460	182T	8.8-8.0/4.0	87.5	74	MTRE953		
	1800	575	182T	3.4	87.5	98	MTRU608		
	1200	230/460	213T	9.2/4.6	87.5	130	MTRE980		
5	3600	208-230/460	184T	13.0-12.4/6.2	87.5	81	MTRE963		PE,CI
	1800	230/460	184T	12.4/6.2	90.2	117	MTRE202		
	1800	208-230/460	184T	14.8-12.6/6.3	87.5	76	MTRE954		
	1800	575	184T	5.0	87.5	78	MTRU619		
	1200	230/460	215T	14.0/7.0	87.5	143	MTRE970		
7 1/2	3600	230/460	213T	18.4/9.2	89.5	114	MTRE972		PE,CI
	1800	230/460	213T	19.2/9.6	91.7	194	MTRE203		
	1800	208-230/460	213T	21.6-20.0/10.0	89.5	118	MTRE955		
	1800	575	213T	8.0	89.5	135	MTRU630		
	1200	208-230/460	254T	21.0-20.4/10.2	89.5	250	MTRU633		
10	3600	230/460	215T	24.0/12.0	89.5	128	MTRE969		PE,CI
	1800	230/460	215T	25.0/12.5	91.7	213	MTRE204		
	1800	208-230/460	215T	28.0-26.0/13.0	91.0	143	MTRE956		
	1800	575	215T	10.2	91.0	138	MTRU640		
	1200	208-230/460	256T	28.3-26.2/13.1	89.5	277	MTRU642		

NOTES:

- | | |
|--|---|
| 2:1 2:1 CT Speed Range; requires modification for 10:1 | PW Capable of part winding start |
| CI Cast iron construction | RB Roller Bearing on shaft end for belted loads only |
| CB 56H,143T,& 145T Combination Base w/ 12 mtg holes | VT Suitable for 2:1 CT operation; no re-work available for 10:1 CT |
| H Class H Insulation | YD 12 Leads for Wye-Delta, Part Winding Start on low voltage, or across-the-line starting |
| N Totally enclosed non ventilated | |
| PE Premium Efficiency | |

MTR**List Prices****Totally Enclosed, Fan Cooled (TEFC) (continued)
1-450HP; 1200, 1800 & 3600 RPM**

- Variable Torque and 10:1 Constant Torque (except as noted)
- 1.0 Service Factor on VFD
- Rolled Steel Construction (except as noted)
- UL Recognized and CSA Certified (except as noted)
- Foot-mounted (except as noted)
- Class B insulation (except as noted)
- Ball bearings (except as noted)
- One year warranty (3 year for Premium Efficiency)

HP	RPM	Voltage	NEMA Frame	Full Load Amps	Full Load Efficiency	Approx. Shipping Weight (lbs.)	Model Number	List Price \$	Notes
15	3600	230/460	254T	36.0/18.0	90.2	189	MTRU644		CI
	1800	230/460	254T	37.6/18.8	92.4	322	MTRE205		PE,CI
	1800	208-230/460	254T	42.0-40.0/20.0	91.0	194	MTRE996		
	1800	575	254T	16.0	91.0	341	MTRU648		CI
	1200	208-230/460	284T	44.7-40.4/20.2	90.2	359	MTRE978		CI
20	3600	230/460	256T	47.0/23.5	90.2	334	MTRU649		CI
	1800	230/460	256T	48.2/24.1	93.0	368	MTRE206		PE,CI
	1800	208-230/460	256T	56.0-53.0/26.5	91.0	178	MTRE965		
	1800	575	256T	20.0	91.0	341	MTRU653		CI
	1200	208-230/460	286T	58.2-52.6/26.3	90.2	408	MTRE968		CI
25	3600	230/460	284TS	58.0/29.0	91.0	392	MTRE975		CI
	1800	208-230/460	284T	64.0-58.0/29.0	92.4	478	MTRE961		CI
	1800	230/460	284T	62.0/31.0	93.6	495	MTRE207		PE,CI
	1800	208-230/460	284TS	68.0-63.0/31.0	92.4	324	MTRE999		CI
	1800	575	284T	25.2	92.4	324	MTRE800		CI
	1200	230/460	324T	67.0/33.5	91.7	483	MTRE820		CI
30	3600	230/460	286TS	70.0/35.0	91.0	430	MTRE964		2:1,CI
	1800	208-230/460	286T	77.0-70.0/35.0	92.4	500	MTRE983		CI
	1800	230/460	286T	73.0/36.5	94.1	423	MTRE208		PE,CI
	1800	208-230/460	286TS	81.0-74.0/37.0	92.4	432	MTRE818		CI
	1800	575	286T	29.6	92.4	320	MTRE817		CI
	1200	230/460	326T	82.0/41.0	91.7	691	MTRE966		CI
40	3600	230/460	324TS	92.0/46.0	91.7	520	MTRE971		2:1,CI
	1800	208-230/460	324T	102-92.0/46.0	93.0	535	MTRE984		2:1,CI
	1800	230/460	324T	95.0/47.5	94.1	602	MTRE209		PE,CI
	1800	230/460	324TS	100/50.0	93.0	525	MTRE816		2:1,CI
	1800	575	324T	41.2	93.0	555	MTRE815		2:1,CI
	1200	230/460	364T	102/51.0	93.0	888	MTRE988		2:1,CI
50	3600	230/460	326TS	114/57.0	92.4	540	MTRE976		2:1,CI
	1800	230/460	326T	117/58.5	93.0	655	MTRE962		2:1,CI
	1800	230/460	326T	120/60.0	94.5	745	MTRE210		PE,2:1,CI
	1800	230/460	326TS	123/61.5	93.0	710	MTRE801		2:1,CI
	1800	575	326T	49.2	93.0	589	MTRU659		2:1,CI
	1200	230/460	365T	124/62.0	93.0	967	MTRE993		2:1,CI
60	3600	230/460	364TS	141/70.5	93.0	1135	MTRE960		CI
	1800	230/460	364T	137/68.5	93.6	1016	MTRE985		2:1,CI
	1800	230/460	364T	138/69.0	95.0	920	MTRE211		PE,2:1,CI
	1800	230/460	364TS	144/72.0	93.6	945	MTRE802		2:1,CI
	1800	575	364T	58.0	93.6	952	MTRU660		2:1,CI
	1200	230/460	404T	144/72.0	93.6	1188	MTRE803		2:1,CI

NOTES:

- | | | | |
|-----|--|----|--|
| 2:1 | 2:1 CT Speed Range; requires modification for 10:1 | PW | Capable of part winding start |
| CI | Cast iron construction | RB | Roller Bearing on shaft end for belted loads only |
| CB | 56H,143T,& 145T Combination Base w/ 12 mtg holes | VT | Suitable for 2:1 CT operation; no re-work available for 10:1 CT |
| H | Class H Insulation | YD | 12 Leads for Wye-Delta, Part Winding Start on low voltage, or across-the-line starting |
| N | Totally enclosed non ventilated | | |
| PE | Premium Efficiency | | |

List Prices

Totally Enclosed, Fan Cooled (TEFC) (continued)

1-450HP; 1200, 1800 & 3600 RPM

MTR

- Variable Torque and 10:1 Constant Torque (except as noted)
- 1.0 Service Factor on VFD
- Rolled Steel Construction (except as noted)
- UL Recognized and CSA Certified (except as noted)
- Foot-mounted (except as noted)
- Class B insulation (except as noted)
- Ball bearings (except as noted)
- One year warranty (3 year for Premium Efficiency)

HP	RPM	Voltage	NEMA Frame	Full Load Amps	Full Load Efficiency	Approx. Shipping Weight (lbs.)	Model Number	List Price \$	Notes
75	3600	230/460	365TS	174/87.0	93.0	997	MTRE991		CI
	1800	230/460	365T	171/86.0	94.1	1106	MTRE957		2:1,CI
	1800	230/460	365T	172/86.0	95.4	1018	MTRE212		PE,2:1,CI
	1800	230/460	365TS	178/89.0	94.1	1026	MTRE804		2:1,CI
	1800	575	365T	71.0	94.1	1035	MTRE805		2:1,CI
	1200	230/460	405T	182/91.0	93.6	1298	MTRE806		2:1,CI
100	3600	230/460	405TS	220/110	94.1	1239	MTRE807		VT,CI
	1800	230/460	405T	228/114	94.5	1277	MTRE959		2:1,CI
	1800	230/460	405T	226/113	95.4	1338	MTRE213		PE,2:1,CI
	1800	230/460	405TS	228/114	94.5	1273	MTRE808		2:1,CI
	1800	575	405T	91.0	94.5	1267	MTRU661		2:1,V,CI
	1200	230/460	445T	238/119	94.1	1819	MTRE809		2:1,CI
125	3600	460	444TS	137	94.5	1731	MTRE992		PW,VT,CI
	1800	460	444T	142	94.5	1805	MTRE987		PW,2:1,CI
	1800	460	444T	141	95.4	1727	MTRE214		PE,PW,2:1,CI
	1800	460	444TS	142	94.5	1787	MTRE810		2:1,CI
	1200	460	445T	155	95.0	2092	MTRE246		PE,2:1,CI
150	3600	460	445TS	167	94.5	2191	MTRE981		VT,CI
	1800	460	445T	172	95.0	2116	MTRE986		2:1,CI
	1800	460	445T	172	95.8	2103	MTRE215		PE,2:1,CI
	1800	460	445TS	172	95.0	2070	MTRE811		2:1,CI
	1200	460	445T	182	95.0	2275	MTRE958		H,RB,2:1,CI
200	3600	460	445TS	222	95.0	2262	MTRE812		H,VT,CI
	1800	460	445T	225	95.0	2287	MTRE989		RB,2:1,CI
	1800	460	445T	225	96.2	2344	MTRE247		PE,RB,2:1,CI
	1800	460	445TS	225	95.0	2215	MTRE813		2:1,CI
	1200	460	447/9T	243	95.0	2740	MTRE814		H,RB,YD,2:1,CI
250	3600	460	447/9T	280	95.0	2074	MTRL451		H,YD,VT,CI
	1800	460	445T	285	95.0	2395	MTRL452		H,RB,YD,VT,CI
	1200	460	447/9T	300	95.4	3394	MTRL456		H,RB,YD,2:1,CI
300	3600	460	447/9T	330	95.4	2702	MTRL459		H,YD,VT,CI
	1800	460	445T	340	95.0	2410	MTRL460		H,RB,YD,VT,CI
	1200	460	447/9T	351	95.4	3440	MTRL465		H,YD,VT,CI
	1200	460	447/9T	351	95.4	3428	MTRL464		H,RB,YD,VT,CI
350	3600	460	447/9TS	385	95.4	3057	MTRL466		H,YD,VT,CI
	1800	460	447/9T	400	95.4	3202	MTRL467		H,RB,YD,VT,CI
400	3600	460	5011S	505	94.5	5200	MTRE274		H,VT,CI
	1800	460	447/9T	460	95.8	3850	MTRE291		H,VT,CI
450	1800	460	447/9T	517	96.5	3645	MTRE292		H,VT,CI

NOTES:

- | | |
|--|---|
| 2:1 2:1 CT Speed Range; requires modification for 10:1 | PW Capable of part winding start |
| CI Cast iron construction | RB Roller Bearing on shaft end for belted loads only |
| CB 56H,143T,& 145T Combination Base w/ 12 mtg holes | VT Suitable for 2:1 CT operation; no re-work available for 10:1 CT |
| H Class H Insulation | YD 12 Leads for Wye-Delta, Part Winding Start on low voltage, or across-the-line starting |
| N Totally enclosed non ventilated | |
| PE Premium Efficiency | |

MTR

List Prices

Severe Duty, Blue Chip XRI

3/4-450HP; 1200, 1800 & 3600 RPM

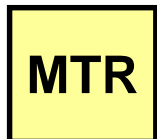
- Variable Torque and 20:1 Constant Torque
- 1.0 Service Factor on VFD
- Totally Enclosed, Fan Cooled (except as noted)
- Marine Duty, IEEE45, USCG CFR46, IP54 construction
- Class F MAXGUARD® insulation system (except as noted)
- Division 2 CSA Certification nameplate, for hazardous location; Class I, Groups A,B,C,D, Temperature Code T2B
- Internal and external epoxy paint
- Cast iron construction, foot-mounted
- Ball bearings (except as noted)
- UL Recognized and CSA Certified
- Three year warranty

HP	RPM	Voltage	NEMA Frame	Full Load Amps	Full Load Efficiency	Approx. Shipping Weight (lbs.)	Model Number	List Price \$	Notes
3/4	1200	460	143T	1.4	80.0	45	MTRE648		N
	1800	460	143T	1.5	85.5	56	MTRE649		N
1	1200	460	145T	1.7	80.0	58	MTRE650		N
	3600	460	143T	2.0	86.5	57	MTRE651		N
1 1/2	1800	460	145T	2.2	84.0	64	MTRE652		N
	1200	230/460	182T	4.2/2.2	87.5	100	MTRE465		N
	3600	460	145T	2.6	86.5	66	MTRE653		N
2	1800	460	145T	3.0	85.5	66	MTRE654		N
	1200	230/460	184T	5.8/2.9	88.5	131	MTRE468		N
	3600	230/460	182T	7.6/3.8	88.5	130	MTRE469		N
3	1800	230/460	182T	7.8/3.9	90.2	120	MTRE470		N
	1200	230/460	213T	8.8/4.4	89.5	180	MTRE471		N
	3600	230/460	184T	11.8/5.9	89.5	125	MTRE602		
5	1800	230/460	184T	12.2/6.1	90.2	127	MTRE473		
	1200	230/460	215T	13.8/6.9	89.5	163	MTRE474		
	3600	230/460	213T	17.8/8.9	91.7	175	MTRE603		N
7 1/2	1800	230/460	213T	19.2/9.6	91.7	222	MTRE476		
	1200	230/460	254T	19.8/9.9	91.0	255	MTRE477		
	3600	230/460	215T	23.6/11.8	91.7	225	MTRE604		
10	1800	230/460	215T	25.0/12.5	91.7	240	MTRE479		
	1200	230/460	256T	26.2/13.1	91.0	268	MTRE480		
	3600	230/460	254T	35.0/17.5	91.7	345	MTRE605		
15	1800	230/460	254T	37.6/18.8	92.4	320	MTRE482		
	1200	230/460	284T	40.8/20.4	91.7	520	MTRE483		
	3600	460	256T	23.4	92.4	450	MTRE606		
20	1800	230/460	256T	48.2/24.1	93.0	363	MTRE485		
	1200	230/460	286T	53.6/26.8	91.7	489	MTRE486		
	3600	230/460	284TS	56.2/28.1	93.6	490	MTRE607		
25	1800	230/460	284T	62.0/31.0	93.6	432	MTRE488		
	1200	230/460	324T	64.0/32.0	92.4	563	MTRE489		
	3600	230/460	286TS	67.6/33.8	93.6	465	MTRE608		
30	1800	230/460	286T	73.0/36.5	94.1	500	MTRE491		
	1200	230/460	326T	77.0/38.5	92.4	579	MTRE492		
	3600	460	324TS	47.0	94.1	705	MTRE609		
40	1800	460	324T	48.5	94.1	683	MTRE624		
	1200	460	364T	49.5	93.6	936	MTRE642		2:1
	3600	460	326TS	58.0	94.5	732	MTRE610		2:1
50	1800	460	326T	60.0	94.1	766	MTRE625		2:1
	1800	460	326TS	60.0	94.1	738	MTRE453		2:1
	1200	460	365T	61.0	93.6	955	MTRE643		2:1

NOTES:

- 2:1 Suitable for Variable Torque or 2:1 CT operation; for 10:1 CT contact Yaskawa
H Class H Insulation
N Totally Enclosed, Non-Ventilated (suitable for 1000:1 CT)
RB Roller Bearing on shaft end for belted loads only
VT Suitable for 2:1 Constant Torque operation; no rework available for 10:1 CT

List Prices
Severe Duty, Blue Chip XRI (continued)
3/4-450HP; 1200, 1800 & 3600 RPM



- Variable Torque and 20:1 Constant Torque
- 1.0 Service Factor on VFD
- Totally Enclosed, Fan Cooled (except as noted)
- Marine Duty, IEEE45, USCG CFR46, IP54 construction
- Class F MAXGUARD® insulation system (except as noted)
- Division 2 CSA Certification nameplate, for hazardous location; Class I, Groups A,B,C,D, Temperature Code T2B
- Internal and external epoxy paint
- Cast iron construction, foot-mounted
- Ball bearings (except as noted)
- UL Recognized and CSA Certified
- Three year warranty

HP	RPM	Voltage	NEMA Frame	Full Load Amps	Full Load Efficiency	Approx. Shipping Weight (lbs.)	Model Number	List Price \$	Notes
60	3600	460	364TS	67.0	94.5	918	MTRE611		2:1
	1800	460	364T	68.0	95.0	948	MTRE626		2:1
	1800	460	364TS	68.0	95.0	948	MTRE454		2:1
	1200	460	404T	72.0	94.5	1156	MTRE644		2:1
75	3600	460	365TS	84.0	94.5	988	MTRE612		2:1
	1800	460	365T	86.0	94.5	1036	MTRE627		2:1
	1800	460	365TS	86.0	94.5	1040	MTRE455		2:1
	1200	460	405T	90.0	94.5	1280	MTRE645		2:1
100	3600	460	405TS	108	95.4	1295	MTRE613		2:1
	1800	460	405T	113	95.8	1330	MTRE628		2:1
	1800	460	405TS	113	95.8	1335	MTRE456		2:1
	1200	460	444T	119	94.5	1690	MTRE646		2:1
125	3600	460	444TS	136	95.0	1705	MTRE614		2:1
	1800	460	444T	141	96.2	1718	MTRE629		2:1
	1800	460	444TS	141	96.2	1820	MTRE457		2:1
	1200	460	445T	155	95.0	1982	MTRE647		2:1
150	3600	460	445TS	165	95.8	2143	MTRE615		2:1
	1800	460	445T	172	95.8	2070	MTRE630		2:1
	1800	460	445TS	172	95.8	2033	MTRE458		2:1
	1200	460	445T	180	95.8	2458	MTRE448		H, RB, 2:1
200	3600	460	445TS	223	95.8	2276	MTRE449		H, 2:1
	1800	460	445T	225	96.2	2343	MTRE631		RB, 2:1
	1800	460	445TS	225	95.8	2276	MTRE459		H, 2:1
	1800	460	447/449T	225	96.5	2757	MTRE854		H, RB, 2:1
	1800	460	447/449T	225	96.5	2759	MTRE770		H, 2:1
	1200	460	447/449T	240	95.8	3077	MTRE687		H, RB, 2:1
	1200	460	447/449T	240	95.8	3087	MTRE773		H, 2:1
250	3600	460	447/449TS	274	96.5	2827	MTRE699		H, 2:1
	1800	460	445T	285	95.8	2375	MTRE450		H, RB, 2:1
	1800	460	447/449T	285	96.5	3020	MTRE771		H, 2:1
	1800	460	447/449T	285	96.5	2989	MTRE690		H, RB, 2:1
	1200	460	447/449T	300	95.8	3045	MTRE774		H, 2:1
	1200	460	447/449T	300	95.8	3414	MTRE688		H, RB, 2:1
300	3600	460	447/449TS	330	96.2	2900	MTRE698		H, VT
	1800	460	447/449T	339	96.5	3211	MTRE691		H, RB, 2:1
	1800	460	447/449T	339	96.5	3211	MTRE772		H, 2:1
350	3600	460	447/449TS	382	96.2	3064	MTRE769		H, VT
	1800	460	447/449T	395	95.8	3209	MTRE692		H, RB, VT
400	1800	460	L447/449T	460	95.8	3850	MTRE776		H, VT
450	1800	460	L447/449T	517	96.2	4050	MTRE777		H, VT

NOTES:

- 2:1 Suitable for Variable Torque or 2:1 CT operation; for 10:1 CT contact factory
- H Class H Insulation
- N Totally Enclosed, Non-Ventilated (suitable for 1000:1 CT)
- RB Roller Bearing on shaft end for belted loads only
- VT Suitable for 2:1 Constant Torque operation; no rework available for 10:1 CT

MTR

List Prices

Explosion Proof, Class I Group D, Class II Groups F & G 1-200HP; 1200, 1800 & 3600 RPM

- Variable Torque and 10:1 Constant Torque (except as noted)
- 1.0 Service Factor on VFD
- Totally Enclosed, Fan Cooled
- C-Face modification available (254-445T only)
- Class F insulation with CR²⁰⁰ magnet wire
- CSA Certified (File Nos. LR21839 and 47504)
- Epoxy paint
- Cast iron construction, foot-mounted
- Ball bearings (except as noted)
- UL Listed (File No. E-12044)
- Two year warranty

HP	RPM	Voltage	NEMA Frame	Full Load Amps	Full Load Efficiency	Approx. Shipping Weight (lbs.)	Model Number	List Price \$	Notes
1	1800	230/460	143T	3.0/1.5	85.5	62	MTRU001		FG,N2
	1200	230/460	145T	3.4/1.7	80.0	69	MTRU039		FG,N2
1.5	3600	230/460	143T	4.0/2.0	82.5	64	MTRU058		FG,N2
	1800	230/460	145T	4.4/2.2	84.0	74	MTRU002		FG,N2
	1200	230/460	182T	5.0/2.5	85.5	138	MTRU040		N2
2	3600	230/460	145T	5.2/2.6	84.0	63	MTRU059		FG,N2
	1800	230/460	145T	6.0/3.0	84.0	76	MTRU003		FG,N2
	1200	230/460	184T	6.0/3.0	86.5	130	MTRU041		
3	3600	230/460	182T	7.4/3.7	85.5	150	MTRU060		N2
	1800	230/460	182T	8.4/4.2	87.5	134	MTRU004		N2
	1200	230/460	213T	8.8/4.4	87.5	213	MTRU042		
5	3600	230/460	184T	12.4/6.2	87.5	146	MTRU061		N2
	1800	230/460	184T	13.0/6.5	87.5	127	MTRU005		N2
	1200	230/460	215T	13.8/6.9	88.5	187	MTRU043		
7.5	3600	230/460	213T	19.0/9.5	88.5	230	MTRU062		N2
	1800	230/460	213T	20.0/10.0	89.5	202	MTRU006		N2
	1200	230/460	254T	20.4/10.2	89.5	390	MTRU044		CD
10	3600	230/460	215T	24.0/12.0	89.5	248	MTRU063		CD
	1800	230/460	215T	25.0/12.5	89.5	262	MTRU007		2:1,N2
	1200	230/460	256T	26.0/13.0	89.5	400	MTRU045		CD
15	3600	230/460	254T	36.0/18.0	90.2	252	MTRU064		CD
	1800	230/460	254T	39.0/19.5	91.0	292	MTRU008		CD,N2
	1200	230/460	284T	40.0/20.0	90.2	525	MTRU046		CD
20	3600	230/460	256T	47.0/23.0	90.2	310	MTRU065		CD
	1800	230/460	256T	50.0/25.0	91.0	376	MTRU009		CD,2:1,N2
	1200	230/460	286T	54.0/27.0	90.2	545	MTRU047		CD
25	3600	230/460	284TS	58.0/29.0	91.0	547	MTRU066		CD
	1800	230/460	284T	63.0/31.5	92.4	456	MTRU010		CD,N2
	1200	230/460	324T	67.0/33.5	91.7	700	MTRU048		CD
30	3600	230/460	286TS	70.0/35.0	91.0	494	MTRU067		CD,2:1
	1800	230/460	286T	74.0/37.0	92.4	390	MTRU011		CD,2:1,N2
	1200	230/460	326T	82.0/40.5	91.7	700	MTRU049		CD
40	3600	230/460	324TS	91.0/45.5	91.7	584	MTRU068		CD
	1800	230/460	324T	100/50.0	93.0	650	MTRU012		CD,2:1
	1200	230/460	364T	103/51.5	93.0	960	MTRU050		2:1
50	3600	230/460	326TS	114/57.0	91.7	700	MTRU069		CD,2:1
	1800	230/460	326T	122/61.0	93.0	678	MTRU013		CD,2:1
	1200	230/460	365T	127/63.5	93.0	1122	MTRU092		CD,2:1
60	1800	230/460	364T	144/72.0	93.6	1000	MTRU093		CD,2:1
	1200	230/460	404T	144/72.0	93.6	1324	MTRU089		CD,2:1
75	1800	230/460	365T	178/89.0	94.1	1138	MTRU094		CD,2:1
	1200	230/460	405T	182/91.0	93.6	1398	MTRU088		CD,2:1
100	1800	230/460	405T	228/114	94.5	1355	MTRU097		CD,2:1
	1200	230/460	444T	238/119	94.1	1839	MTRU095		CD,2:1
125	1800	460	444T	146	94.5	1835	MTRU085		CD,2:1
150	1800	460	445T	172	95.0	2500	MTRU018		CD,2:1
200	1800	460	445T	225	95.0	2377	MTRU019		CD,2:1,RB

NOTES:

- 2:1 Suitable for Variable Torque or 2:1 CT operation; for 10:1 CT contact Yaskawa
 CD Class I Groups C & D, Class II Groups F & G
 FG Rolled steel fan guard
 RB Roller Bearing on shaft end for belted loads only
 N2 Motor is also wound for 208V, but is not suitable for use on VFD at 208V

List Prices Washdown Duty

MTR

1/2-10HP; 1200, 1800 & 3600 RPM

- Variable Torque; Constant Torque speed range as noted
- 1.0 Service Factor on VFD
- Totally Enclosed, Fan Cooled (except as noted)
- 303 Stainless steel shaft with spring loaded contact seals in each endshield
- Cast conduit box with threaded openings, stainless steel cover
- Internal corrosion resistant coatings on frame, endshields, rotor and stator
- Plugged drain holes in each endshield for all angle mounting
- Stainless steel fan guard (56-145T frames) or epoxy coated fan guard (182T-215T frames)
- Foot-mounted (except as noted)
- Double Sealed ball bearings
- Class F MAXGUARD® Insulation syst
- USDA approved white epoxy paint
- UL Recognized and CSA Certified
- One year warranty

HP	RPM	Voltage	NEMA Frame	Full Load Amps	CT Speed Range	Full Load Efficiency	Approx. Shipping Weight	Model Number	List Price \$	Notes
1/2	3600	208-230/460	56C	1.5-1.5/0.8	6:1	76.0	30	MTRN566		N
	1800	208-230/460	56C	1.8-1.8/0.9	6:1	78.5	26	MTRN567		N
	1200	208-230/460	56C	2.3-2.3/1.2	6:1	77.0	23	MTRN568		N
3/4	3600	208-230/460	56C	2.4-2.4/1.2	6:1	75.5	24	MTRN569		N
	1800	208-230/460	56C	2.5-2.5/1.3	6:1	80.0	33	MTRN599		N
	1200	208-230/460	56HC	3.0-3.0/1.5	6:1	78.5	25	MTRN600		N,CB
1	3600	208-230/460	56C	2.6-2.6/1.3	6:1	78.0	35	MTRN601		N
	1800	208-230/460	56C	3.6-3.6/1.8	6:1	80.0	36	MTRN602		N
	1800	208-230/460	143TC	3.2-3.2/1.6	6:1	80.0	41	MTRN603		N
	1200	208-230/460	56HC	4.0-4.0/2.0	3:1	77.0	26	MTRN604		CB
1.5	3600	208-230/460	56C	3.8-3.8/1.9	6:1	80.0	44	MTRN605		N
	1800	208-230/460	56C	5.0-5.0/2.5	6:1	80.0	34	MTRN606		N
	1800	208-230/460	145TC	4.2-4.2/2.1	6:1	80.0	48	MTRN607		N
	1200	208-230/460	56HC	5.7-5.7/2.8	3:1	77.0	31	MTRN608		CB
2	3600	208-230/460	56HC	5.0-5.0/2.5	6:1	78.0	48	MTRN609		N,CB
	3600	208-230/460	145TC	5.0-5.0/2.5	6:1	85.0	46	MTRN610		N
	1800	208-230/460	56C	6.2-6.2/3.1	3:1	81.5	39	MTRN611		
	1800	208-230/460	145TC	6.0-6.0/3.0	3:1	84.0	46	MTRN612		
3	3600	208-230/460	145TC	8.0-8.0/4.0	3:1	85.5	45	MTRN613		
	1800	208-230/460	182TC	8.2-8.2/4.1	10:1	87.5	77	MTRN614		
5	3600	208-230/460	184TC	13.0-13.0/6.5	3:1	86.0	84	MTRN615		
	1800	208-230/460	184TC	13.0-13.0/6.5	3:1	87.5	90	MTRN616		
7.5	3600	208-230/460	213TC	17.6-16.8/8.4	3:1	88.5	120	MTRN617		
	1800	208-230/460	213TC	20.4-20.4/10.2	3:1	89.5	145	MTRN618		
10	1800	208-230/460	215TC	26.0-26.0/13.0	3:1	89.5	145	MTRN619		

NOTES:

- N Totally Enclosed Non Ventilated
 CB 56H, 143T, and 145T, combination base with 12 mounting holes

Note that stainless steel washdown motors are also available to 10 HP; contact Yaskawa for more information



List Prices
microMAX™
1/8-10HP; 1800 RPM

- 20:1 Constant Torque (TEFC); 1000:1 Constant Torque (TENV)
- 1.0 Service Factor on VFD
- Low operating temperature (Class "B" rise or lower)
- Continuous duty at 40°C ambient
- Class H insulation with CR²⁰⁰ Corona Resistant, 200°C rated magnet wire
- Rolled steel frame construction
- Foot-mounted
- Ball bearings
- UL Recognized and CSA Certified
- Three year warranty

C-Face with Feet

HP	RPM	Voltage	Enclosure	NEMA Frame	Full Load Amps	Approx. Shipping Weight (lbs.)	Model Number	List Price \$	Notes
1/8	1800	230	TENV	56C	1	18	MTRY605		
1/4	1800	230	TENV	56C	1	18	MTRY500		
1/3	1800	230	TENV	56C	1.2	18	MTRY502		
1/2	1800	230/460	TENV	56C	1.8/0.9	20	MTRY360		
	1800	575	TENV	56C	0.7	20	MTRY361		
3/4	1800	230/460	TEFC	56C	2.8/1.4	23	MTRY362		PL
	1800	575	TEFC	56C	1.1	23	MTRY363		PL
1	1800	230/460	TEFC	56C	3.2/1.6	28	MTRY364		PL
	1800	575	TEFC	56C	1.3	28	MTRY365		PL
1 1/2	1800	230/460	TENV	145TC	4.8/2.4	49	MTRY366		CB,PL
	1800	575	TENV	145TC	1.9	49	MTRY367		CB,PL
2	1800	230/460	TEFC	145TC	5.8/2.9	50	MTRY368		CB,PL
	1800	575	TEFC	145TC	2.3	50	MTRY369		CB,PL
3	1800	230/460	TEFC	182/145TC	8.4/4.2	52	MTRY370		2:1,DM,PL
	1800	575	TEFC	182/145TC	3.4	52	MTRY371		2:1,DM,PL
5	1800	230/460	TEFC	184TC	13.0/6.5	88	MTRY372		CB,PL
	1800	575	TEFC	184TC	5.2	88	MTRY373		CB,PL
7.5	1800	230/460	TEFC	213TC	21.4/10.7	88	MTRY994		CB,PL
	1800	575	TEFC	213TC	8.5	88	MTRY995		CB,PL
10	1800	230/460	TEFC	215TC	28.0/14.0	88	MTRY996		CB,PL
	1800	575	TEFC	215TC	11.2	88	MTRY997		CB,PL

C-Face, Round Frame - No Feet

HP	RPM	Voltage	Enclosure	NEMA Frame	Full Load Amps	Approx. Shipping Weight (lbs.)	Model Number	List Price \$	Notes
1/8	1800	230	TENV	56C	1	17	MTRY606		
1/4	1800	230	TENV	56C	1	17	MTRY501		
1/3	1800	230	TENV	56C	1.2	17	MTRY503		
1/2	1800	230	TENV	56C	1.8	19	MTRY505		
	1800	230/460	TENV	56C	1.8/0.9	19	MTRY374		
	1800	575	TENV	56C	0.7	19	MTRY375		
3/4	1800	230	TEFC	56C	2.8	23	MTRY507		
	1800	230/460	TEFC	56C	2.8/1.4	23	MTRY376		
	1800	575	TEFC	56C	1.1	23	MTRY377		
1	1800	230	TEFC	56C	3.2	27	MTRY521		
	1800	230/460	TEFC	56C	3.2/1.6	27	MTRY378		
	1800	575	TEFC	56C	1.3	27	MTRY379		

NOTES:

- CB 56H, 143T, and 145T, combination base with 12 mounting holes
- PL Top mounted conduit box with pigtail leads (TEFC and 1.5 HP TENV)
- CB Bolt-on, removable base for footless mounting option
- 2:1 2:1 constant torque speed range; contact factory for greater than 2:1 capability
- DM 182T base and shaft height, 145TC mounting face and shaft dimensions

List Prices
BlackMAX® Vector Duty
1/4-30HP; 1200 & 1800 RPM



- 1000:1 Constant Torque
- 1.0 Service Factor on VFD
- Totally Enclosed Non Vent, C-Face, foot-mounted (except as noted)
- Class F MAXGUARD® insulation system
- F1 standard, field reversible to F2 (except as noted)
- Encoder and brake provisions included on opposite drive end
- Ball bearings
- Class F N/C thermostats
- Optimized for VFD operation
- Continuous duty at 40°C ambient
- UL Recognized and CSA Certified
- Three year warranty

HP	RPM	Voltage	NEMA Frame	Full Load Amps	Approx. Shipping Weight (lbs.)	Model Number	List Price \$	w/ Dynapar HS35 Encoder		w/ Lakeshore SL56 Encoder		Notes
								Model Number	List Price \$	Model Number	List Price \$	
1/4	1800	230/460	56C	1.2/0.6	19	MTRY592		MTRY592D		MTRY592L		RS,F1
1/2	1800	230/460	56C	1.6/0.8	28	MTRY534		MTRY534D		MTRY534L		RS,FB,F1
	1800	575	56C	0.6	28	MTRY555		MTRY555D		MTRY555L		RS,FB,F1
1	1800	230/460	56C	3.0/1.5	39	MTRY535		MTRY535D		MTRY535L		RS,FB,F1
	1800	575	56C	1.2	40	MTRY556		MTRY556D		MTRY556L		RS,FB,F1
	1800	230/460	143TC	3.0/1.5	43	MTRY536		MTRY536D		MTRY536L		RS,FB,F1
	1200	230/460	145TC	3.8/1.9	49	MTRY537		MTRY537D		MTRY537L		RS,FB,F1
1.5	1800	230/460	145TC	4.8/2.4	50	MTRY538		MTRY538D		MTRY538L		RS,FB,F1
2	1800	230/460	145TC	6.0/3.0	70	MTRY551		MTRY551D		MTRY551L		CI
	1800	575	145TC	2.4	70	MTRY557		MTRY557D		MTRY557L		CI
	1200	230/460	184TC	6.6/3.3	88	MTRY540		MTRY540D		MTRY540L		AL
3	1800	230/460	182TC	8.4/4.2	93	MTRY541		MTRY541D		MTRY541L		AL
	1800	575	182TC	3.4	98	MTRY558		MTRY558D		MTRY558L		AL
	1200	230/460	213TC	9.4/4.7	118	MTRY542		MTRY542D		MTRY542L		AL
5	1800	230/460	184TC	14.0/7.0	103	MTRY543		MTRY543D		MTRY543L		AL
	1800	575	184TC	5.4	103	MTRY559		MTRY559D		MTRY559L		AL
	1200	230/460	215TC	15.4/7.7	138	MTRY544		MTRY544D		MTRY544L		AL
7.5	1800	230/460	213TC	21.0/10.5	146	MTRY545		MTRY545D		MTRY545L		AL
	1800	575	213TC	8.4	150	MTRY560		MTRY560D		MTRY560L		AL
	1200	230/460	254TC	22.0/11.0	209	MTRY546		MTRY546D		MTRY546L		AL
10	1800	230/460	215TC	27.0/13.5	159	MTRY547		MTRY547D		MTRY547L		AL
	1800	575	215TC	10.8	159	MTRY561		MTRY561D		MTRY561L		AL
	1200	230/460	256TC	28.0/14.0	275	MTRY548		MTRY548D		MTRY548L		AL
15	1800	230/460	254TC	40.0/20.0	250	MTRY549		MTRY549D		MTRY549L		AL,ID
	1800	575	254TC	16	250	MTRY562		MTRY562D		MTRY562L		AL,ID
20	1800	230/460	256TC	50.0/25.0	300	MTRY552		MTRY552D		MTRY552L		ID,CI
	1800	575	256TC	20	300	MTRY563		MTRY563D		MTRY563L		ID,CI
25	1800	230/460	284TC	62.0/31.0	495	MTRY553		MTRY553D		MTRY553L		ID,CI
	1800	575	284TC	24.8	495	MTRY567		MTRY567D		MTRY567L		ID,CI
30	1800	230/460	286TC	80.0/40.0	575	MTRY393		MTRY393D		MTRY393L		ID,CI
	1800	575	286TC	32	575	MTRY394		MTRY394D		MTRY394L		ID,CI

NOTES:

- FB Bolt-on, removable base for footless mounting option
- AL Aluminum Frame Construction
- CI Cast iron construction
- F1 F1 Mounting Only, cannot modify to F2
- ID Intermittent duty from 90-120 Hz operation
- RS Steel Frame Construction



List Prices

BlackMAX® Vector Duty Explosion Proof

Class I Groups C & D, Class II Groups F & G

1/4-1HP; 1800 RPM

- 1000:1 Constant Torque
- 1.0 Service Factor on VFD
- Totally Enclosed Non Vent, C-Face, foot-mounted (except as noted)
- Class F MAXGUARD® insulation system
- Top mount (F3) conduit box included, shipped loose
- No encoder provisions
- Ball bearings
- Class F N/C thermostats
- Optimized for VFD operation
- Continuous duty at 40°C ambient
- UL Listed (File No. E12044)
- CSA Certified (File Nos. LR47504 and LR21839)
- Three year warranty

HP	RPM	Voltage	NEMA Frame	Full Load Amps	Approx. Shipping Weight (lbs.)	Model Number	List Price \$
1/4	1800	230/460	56C	1.1/0.55	34	MTRY600	
1/3	1800	230/460	56C	1.2/0.6	34	MTRY601	
1/2	1800	230/460	56C	1.6/0.8	39	MTRY602	
3/4	1800	230/460	56C	2.4/1.2	42	MTRY603	
1	1800	230/460	56C	3.0/1.5	45	MTRY604	

List Prices

Blue MAX® 2000 Vector Duty 1-700HP; 1200, 1800, & 3600 RPM



- 2000:1 Constant Torque
- 1.0 Service Factor on VFD
- Totally Enclosed, foot-mounted; C-Face as noted
- Class H MAXGUARD® insulation system
- F1 standard, field reversible to F2 (except as noted)
- Encoder provisions included on opposite drive end

- Ball bearings (except as noted)
- Class F N/C thermostats
- Cast iron construction
- Continuous duty at 40°C ambient
- UL Recognized and CSA Certified
- Three year warranty

HP	RPM	Voltage	Enclosure	NEMA Frame	Full Load Amps	Approx. Shipping Weight (lbs.)	Model Number	List Price \$	w/ Dynapar HS35 Encoder		w/ Lakeshore SL56 Encoder		Notes	
									Model Number	List Price \$	Model Number	List Price \$		
1	3600	230/460	TENV	143T	3.0/1.5	61	MTRY525		MTRY525D		MTRY525L		B	
	1800	230/460	TENV	143TC	3.0/1.5	61								
	1200	230/460	TENV	145T	3.4/1.7	68								
1.5	3600	230/460	TENV	145T	4.0/2.0	68	MTRY590		MTRY590D		MTRY590L			
	1800	230/460	TENV	145TC	4.6/2.3	68								
	1200	230/460	TENV	184T	4.8/2.4									
2	3600	230/460	TENV	145T	5.4/2.7	70	MTRY526		MTRY526D		MTRY526L			
	1800	230/460	TENV	145TC	6.0/3.0									
	1200	230/460	TENV	145T	6.0/3.0									
3	3600	230/460	TENV	182T	7.4/3.7	110	MTRY527		MTRY527D		MTRY527L			
	1800	230/460	TENV	182TC	8.0/4.0									
	1200	230/460	TENV	213T	9.0/4.5									
5	3600	230/460	TENV	184T	12.4/6.2	117	MTRY564		MTRY564D		MTRY564L		B	
	1800	230/460	TENV	184TC	13.4/6.7									
	1200	230/460	TENV	215T	14.4/7.2									
7.5	3600	230/460	TENV	213T	19/9.5	191	MTRY595		MTRY595D		N/A			
	1800	230/460	TEFC	213TC	19.4/9.7									
	1800	230/460	TENV	213TC	21.0/10.5									
	1200	230/460	TENV	254T	22/11									
10	3600	230/460	TENV	215T	24/12	211	MTRY596		MTRY596D		N/A			
	1800	230/460	TEFC	215TC	25.4/12.7									
	1800	230/460	TENV	215TC	26.0/13.0									
	1200	230/460	TENV	256T	31/15.5									
15	3600	230/460	TEBC	254T	37.0/18.5	339	MTRY597		MTRY597D		N/A			
	1800	230/460	TEFC	254TC										
	1800	230/460	TENV	254TC										40.4/20.2
	1200	230/460	TEBC	284TC										40.0/20.0
20	3600	230/460	TEBC	256T	52.0/26.0	375	MTRY598		MTRY598D		N/A			
	1800	230/460	TEFC	256TC										
	1800	230/460	TENV	256TC										50.0/25.0
	1200	230/460	TEBC	286TC										52.4/26.2
25	3600	230/460	TEBC	284TS	63.0/31.5	492	MTRY569		MTRY569D		N/A			
	1800	230/460	TEFC	284T										
	1800	230/460	TEBC	284TC										63.0/31.5
	1200	230/460	TEBC	324TC										67.0/33.5
30	3600	230/460	TEBC	286TS	77.0/38.5	594	MTRY570		MTRY570D		N/A			
	1800	230/460	TEFC	286T										
	1800	230/460	TEBC	286TC										74.0/37.0
	1200	230/460	TEBC	326TC										82.0/41.0
40	3600	230/460	TEBC	324TS	100/50.0	540	MTRY571		MTRY571D		N/A			
	1800	230/460	TEFC	324T										
	1800	230/460	TEBC	324TC										100/50.0
	1200	230/460	TEBC	364TC										104/52.0
50	3600	230/460	TEBC	326TS	120/60.0	540	MTRY572		MTRY572D		N/A			
	1800	230/460	TEFC	326T										
	1800	230/460	TEBC	326TC										120/60.0
	1200	230/460	TEBC	365TC										130/65.0

NOTES:

- B NEMA Design B
- 20:1 20:1 Constant Torque (2000:1 CT, 60 minute duty)
- RB Roller Bearing on shaft end



List Prices
Blue MAX® 2000 Vector Duty (continued)
1-700HP; 1200, 1800, & 3600 RPM

- 2000:1 Constant Torque
- 1.0 Service Factor on VFD
- Totally Enclosed, foot-mounted; C-Face as noted
- Class H MAXGUARD® insulation system
- F1 standard, field reversible to F2 (except as noted)
- Encoder provisions included on opposite drive end
- Ball bearings (except as noted)
- Class F N/C thermostats
- Cast iron construction
- Continuous duty at 40°C ambient
- UL Recognized and CSA Certified
- Three year warranty

HP	RPM	Voltage	Enclosure	NEMA Frame	Full Load Amps	Approx. Shipping Weight (lbs.)	Model Number	List Price \$	w/ Dynapar HS35 Encoder		w/ Lakeshore SL56 Encoder		Notes
									Model Number	List Price \$	Model Number	List Price \$	
60	3600	230/460	TEBC	364TS									RB
	1800	230/460	TEFC	364T	147/73.5	965	MTRY573		MTRY573D		N/A		RB
	1800	230/460	TEBC	364TC	147/73.5	1062	MTRY515		MTRY515D		MTRY515L		RB
	1200	230/460	TEBC	404TC	142/71.0	1380	MTRY587		MTRY587D		MTRY587L		RB
75	3600	230/460	TEBC	365TS	168/84								RB
	1800	230/460	TEFC	365T	184/92.0	1006	MTRY574		MTRY574D		N/A		RB
	1800	230/460	TEBC	365TC	180/90.0	1106	MTRY516		MTRY516D		MTRY516L		RB
	1200	230/460	TEBC	405TC	180/90.0	1450	MTRY588		MTRY588D		MTRY588L		B, RB
100	3600	230/460	TEBC	405TS	224/112								RB
	1800	230/460	TEFC	405T	230/115	1308	MTRY575		MTRY575D		N/A		RB
	1800	230/460	TEBC	405TC	230/115	1429	MTRY517		MTRY517D		MTRY517L		RB
	1200	230/460	TEBC	444TC	250/125	2150	MTRY589		MTRY589D		MTRY589L		RB
125	3600	460	TEBC	444TS									RB
	1800	460	TEFC	444T	143	2062	MTRY576		MTRY576D		N/A		RB
	1800	460	TEBC	444T	138	2110	MTRY518		MTRY518D		MTRY518L		B, RB
	1200	460	TEBC	445T	153								RB
150	3600	460	TEBC	445TS	168								RB
	1800	460	TEFC	445T	170	2246	MTRY577		MTRY577D		N/A		RB
	1800	460	TEBC	445T	170	2321	MTRY519		MTRY519D		MTRY519L		RB
	1200	460	TEBC	445T	186						5P626-0149		RB
200	3600	460	TEBC	449TS	226								RB
	1800	460	TEFC	445T	230	2404	MTRY578		MTRY578D		N/A		RB
	1800	460	TEBC	445T	230	2457	MTRY520		MTRY520D		MTRY520L		RB
	1200	460	TEBC	449T	239								RB
250	3600	460	TEBC	449TS	274								RB
	1800	460	TEFC	449T	295	2800	MTRY579		MTRY579D		N/A		RB
	1800	460	TEBC	449T	295	2880	MTRY531		MTRY531D		MTRY531L		RB
	1200	460	TEBC	449T	302								RB
300	1800	460	TEFC	449T	330	2890	MTRY580		MTRY580D		N/A		20:1, RB
	1800	460	TEBC	449T	327	2950	MTRY532		MTRY532D		MTRY532L		RB
	1200	460	TEBC	449T	350								RB
350	1800	460	TEBC	449T	385	3075	MTRY533		MTRY533D		MTRY533L		RB
	1200	460	TEBC	5011	408								RB
400	1800	460	TEBC	5011	432								RB
	1200	460	TEBC	5011	468								RB
450	1800	460	TEBC	5011	510								RB
	1200	460	TEBC	5011	522								RB
500	1800	460	TEBC	5011	585								RB
	1200	460	TEBC	5013	590								RB
600	1800	460	TEBC	5013	660								RB
700	1800	460	TEBC	5013									RB

NOTES:

- B NEMA Design B
- 20:1 20:1 Constant Torque (2000:1 CT, 60 minute duty)
- RB Roller Bearing on shaft end

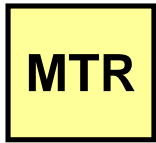
List Prices

BlueMAX® Vector Duty Explosion Proof
Class I Groups C & D, Class II Groups F & G
1-20HP; 1800 RPM



- 2000:1 Constant Torque
- 1.0 Service Factor on VFD
- Totally Enclosed, foot-mounted; C-Face as noted
- Class F MAXGUARD® insulation system
- F1 standard, not field reversible to F2
- Ball bearings
- Includes BEI H38 Explosion Proof encoder, 1024ppr, Class I Group D, Class II Groups E, F, G
- Class F N/C thermostats
- Cast iron construction
- Continuous duty at 40°C ambient
- UL Listed (File No. E12044)
- CSA Certified (File Nos. LR47504 and LR21839)
- Three year warranty

HP	RPM	Voltage	NEMA Frame	Full Load Amps	Approx. Shipping Weight (lbs.)	Model Number	List Price \$
1	1800	230/460	143TC	3.0/1.5	55	MTRY978	
2	1800	230/460	145TC	5.8/2.9	68	MTRY979	
3	1800	230/460	182TC	8.2/4.1	110	MTRY980	
5	1800	230/460	213TC	13.0/6.5	180	MTRY981	
7.5	1800	230/460	254TC	25.0/12.5	300	MTRY982	
10	1800	230/460	254TC	27.0/13.5	350	MTRY983	
15	1800	230/460	254TC	40.4/20.2	360	MTRY984	
20	1800	230/460	284TC	57.6/28.8	525	MTRY985	



List Prices

Blue MAX® 2000 Vector Duty Brakemotor 1-700HP; 1200, 1800, & 3600 RPM

- 2000:1 Constant Torque
- 1.0 Service Factor on VFD
- Totally Enclosed Non-Vent, C-Face, foot-mounted
- Class F MAXGUARD® insulation system
- Includes 140% rated spring-set self-adjusting disk brake
(brake coil voltage matches motor unless otherwise specified)
- Lakeshore encoder available as a modification
- Ball bearings
- Class F N/C thermostats
- Cast iron construction
- Continuous duty at 40°C ambient
- UL Recognized and CSA Certified
- Three year warranty (brake disks exempt)
- Horizontal mounting

HP	RPM	Voltage	NEMA Frame	Full Load Amps	Braking Torque (Lb-ft)	Approx. Shipping Weight (lbs.)	Model Number	List Price \$	Encoder	
									Type	List Adder \$
1	1800	230/460	143TC	3.0/1.5	6	67	MTRY986		SL56	
2	1800	230/460	145TC	6.0/3.0	10	77	MTRY987		SL56	
3	1800	230/460	182TC	8.2/4.1	15	120	MTRY988		SL85	
5	1800	230/460	184TC	13.4/6.7	25	145	MTRY989		SL85	
7.5	1800	230/460	213TC	21.0/10.5	35	226	MTRY990		SL85	
10	1800	230/460	215TC	26.0/13.0	50	332	MTRY991		SL85	
15	1800	230/460	254TC	39.0/19.5	75	350	MTRY992		SL85	
20	1800	230/460	256TC	54.0/27.0	105	375	MTRY993		SL85	

List Prices
Blue MAX® 2000 Vector Duty Modified
1-1000HP; 900, 1200, 1800, & 3600 RPM



- 2000:1 Constant Torque
- 1.0 Service Factor on VFD
- Totally Enclosed, foot-mounted; C-Face as noted
- Class H MAXGUARD® insulation system
- F1 standard, field reversible to F2 (except as noted)
- Encoder provisions included on opposite drive end
- Ball bearings (except as noted)
- Class F N/C thermostats
- Cast iron construction
- Continuous duty at 40°C ambient
- UL Recognized and CSA Certified
- Three year warranty

HP	RPM	Totally Enclosed, Non-Ventilated (TENV) 2000:1 CT			Totally Enclosed, Fan-Cooled (TEFC) 20:1 CT ⁽¹⁾			Totally Enclosed, Blower-Cooled (TEBC) 2000:1 CT		
		NEMA Frame	List Price \$	460V Full Load Amps	NEMA Frame	List Price \$	460V Full Load Amps	NEMA Frame	List Price \$	460V Full Load Amps
1	3600	143T		1.5						
	1800	143T		1.5						
	1200	145T		1.7						
	900	184T		2.5	184T					
1.5	3600	145T		2.0						
	1800	145T		2.3						
	1200	184T		2.4						
	900	213T		3.6	213T			213T		
2	3600	145T		2.7						
	1800	145T		3.0						
	1200	184T		3.0	184T					
	900	213T		3.8	213T		4.8	213T		
3	3600	182T		3.7	182T					
	1800	182T		4.0	182T					
	1200	213T		4.5	213T			213T		
	900	254T		4.6	215T		5.0	254T		
5	3600	184T		6.2	213T			213T		
	1800	184T		6.7	184T		6.7			
	1200	215T		7.2	215T		6.9	215T		
	900	256T		7.6	254T		8.5	256T		
7.5	3600	213T		9.5	213T		9.5	213T		
	1800	213T		10.5	213T		9.7	213T		
	1200	254T		11.0	254T		11.0	254T		
	900				256T		11.0	256T		12.0
10	3600	215T		12.0	215T		12.0	215T		
	1800	215T		13.0	215T		12.7	215T		
	1200	256T		15.5	256T		13.5	256T		
	900				284T		14.5	284T		15.5
15	3600	256T		18.0	254T		18.0	254T		
	1800	254T		20.2	254T		18.5	254T		
	1200	284T		20.4	284T		22.0	284T		20.0
	900				286T		21.0	286T		26.0
20	3600	286T		23.5	256T		23.4	256T		
	1800	256T		25.0	256T		26.0	256T		
	1200	326T		29.5	286T		27.0	286T		26.2
	900				326T		31.0	324T		32.0
25	3600							284TS		29.0
	1800	284T		31.0	284T		31.5	284T		31.5
	1200	364T		31.0	324T		33.0	324T		33.5
	900				364T		35.5	326T		35.0
30	3600							286TS		35.0
	1800	326T		40.0	286T		38.5	286T		37.0
	1200	365T		42.0	326T		38.5	326T		41.0
	900				364T		44.0	364T		44.0
40	3600							324TS		45.5
	1800	364T		48.0	324T		50.0	324T		50.0
	1200	405T		48.5	364T		52.0	364T		49.5
	900				365T		56.0	365T		55.5

NOTES:

(1) for 2000:1 CT, Consult Factory



List Prices

Blue MAX® 2000 Vector Duty Modified

1-1000HP; 900, 1200, 1800, & 3600 RPM

- 2000:1 Constant Torque
- 1.0 Service Factor on VFD
- Totally Enclosed, foot-mounted; C-Face as noted
- Class H MAXGUARD® insulation system
- F1 standard, field reversible to F2 (except as noted)
- Encoder provisions included on opposite drive end
- Ball bearings (except as noted)
- Class F N/C thermostats
- Cast iron construction
- Continuous duty at 40°C ambient
- UL Recognized and CSA Certified
- Three year warranty

HP	RPM	Totally Enclosed, Non-Ventilated (TENV) 2000:1 CT			Totally Enclosed, Fan-Cooled (TEFC) 20:1 CT ⁽¹⁾			Totally Enclosed, Blower-Cooled (TEBC) 2000:1 CT		
		NEMA Frame	List Price \$	460V Full Load Amps	NEMA Frame	List Price \$	460V Full Load Amps	NEMA Frame	List Price \$	460V Full Load Amps
50	3600							326TS		57.0
	1800	L365T		59.5	326T		60.5	326T		60.0
	1200	444T		61.5	365T		62.0	365T		62.0
	900				404T		66.0	404T		69.0
60	3600				364TS			364TS		67.0
	1800	405T		68.0	364T		74.0	364T		74.0
	1200	445T		73.0	404T		71.0	404T		71.0
	900	445T		85.0	405T		80.0	405T		80.0
75	3600				365TS			365TS		84.0
	1800	444T		87.0	365T		92.0	365T		90.0
	1200	445T		105	405T		95.0	405T		90.0
	900				444T		108	444T		107
100	3600				405TS			405TS		112
	1800	445T		110	405T		115	405T		115
	1200	449T		124	444T		125	444T		125
	900				445T		142	445T		133
125	3600				444TS			444TS		
	1800	445T		158	444T		143	444T		138
	1200	449T		154	445T		153	445T		153
	900				449T		172	445T		169
150	3600				445TS			445TS		168
	1800	449T		173	445T		170	445T		170
	1200	449T		205	449T		192	445T		186
	900				449T		202	449T		218
200	3600				449TS			449TS		226
	1800	L449T		260	445T		230	445T		230
	1200				449T		240	449T		239
	900				5011		275	449T		275
250	3600	N/A						449TS		274
	1800				449T		295	449T		295
	1200				449T		302	449T		302
	900				5011		340	5011		325
300	1800	N/A			449T		327	449T		327
	1200				5013		362	449T		350
	900				5013		420	5013		410
350	1800	N/A			449T		386	449T		385
	1200				5013		415	5011		408
	900							5013		458
400	1800	N/A			5011		444	5011		432
	1200				5013		485	5011		468
	900							5013		522
450	1800	N/A			5011		508	5011		510
	1200							5011		522
500	1800	N/A			5013		570	5011		585
	1200							5013		590
600	1800	N/A						5013		660
650	1800	N/A						5013		
700	1800	N/A						5013		

NOTES:

(1) for 2000:1 CT, Consult Factory



Replacement Encoders

These electrical devices sense rotor speed and direction, providing feedback to a control device.

Part No. 05P00640-	PPR	Frame Range	Motor Enclosure	Type	Notes	List Price \$
0006	1024	56-286	TENV	Dynapar HS35	Incl.10-pin mating connector	
0022	1024	213-449	TEFC	Dynapar HS35	Incl.10-pin mating connector	
0015	1024	56-286	TENV	Northstar SL56	Includes EPIC connector	
0017	1024	56-286	TENV	Northstar SL56	Incl. EPIC conn & Marker Pulse	
0020	1024	284-449	TEBC	Northstar SL56	Requires 05P00626-0077	
0077	N/A	N/A	N/A		Conduit Box for 05P00640-0020	
0007	2048	56-286	TENV	Dynapar HS35	Incl.10-pin mating connector	

Encoder Cables

This cable has a 10-pin military style connector and loose wire on the other. It is used to connect an HS35 encoder to a drive's feedback card.

Part No. 46S03255-	Length (ft.)	List Price \$
0010	10	
0015	15	
0030	30	
0050	50	
0075	75	
0100	100	

Replacement Blower Motors

For BlueMax TEBC motors.

Part No. 05P00626-	RPM	Frame Range	List Price \$
0173	1800	213-445T	
0237	1800	213-445T, 575V	
0238	1800	449-5013L	

Slide Bases

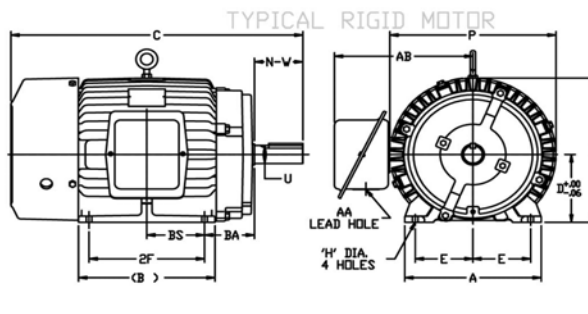
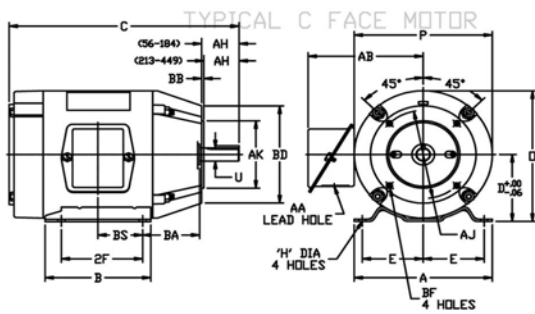
Used to adjust belt tension during motor installation. Made with heavy duty steel construction with single screw adjustment for 143T-215T frames and double screw adjustment for 254T frame and larger.

Part No. 05P00626-	Frame	List Price \$
0230	143	
0231	145	
0013	182	
0121	184	
0232	213	
0213	215	
0233	254	
0056	256	
0212	284	
0151	286	
0059	324	
0102	326	
0081	364	
0080	365	
0132	404	
0223	405	
0131	444	
0234	445	
0235	447	
0184	449	



Dimensions

ODP, TEFC, Washdown, & BlueMAX Explosion Proof



A,B,D,P, & AB ARE DIMENSIONS SPECIFIC TO MARATHON MOTORS

NEMA QUICK REFERENCE DIMENSIONAL CHART

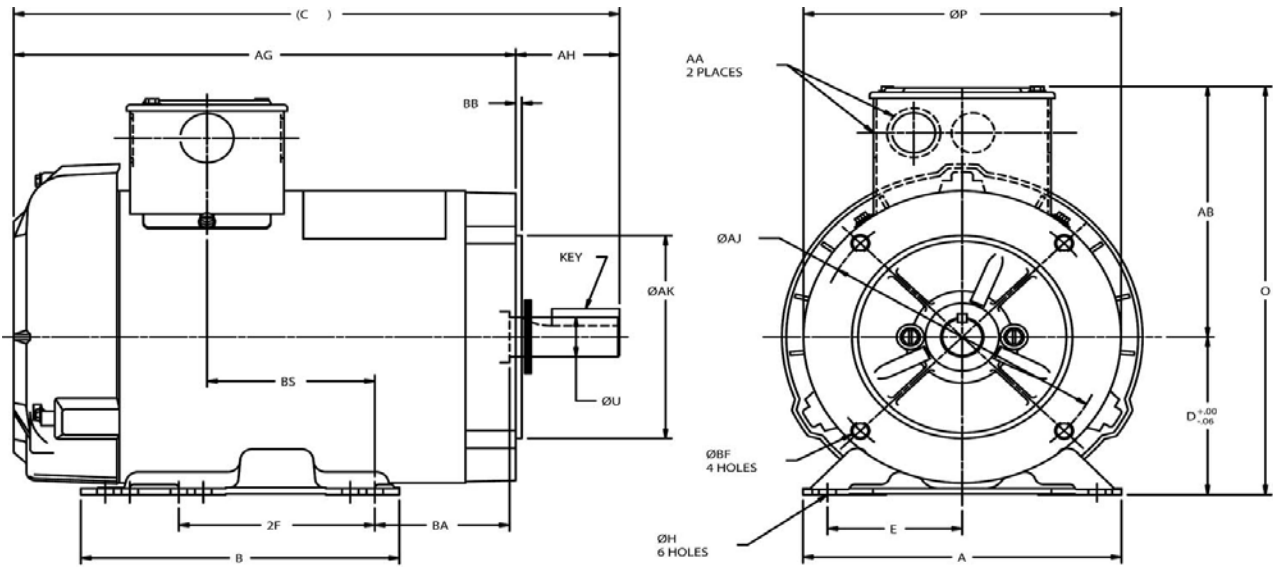
REFER TO YOUR MARATHON ELECTRIC CATALOG FOR 'C' DIM'S

FRAME	A O.M.A.X.	B O.M.A.X.	D	E	2F	H	D O.M.A.X.	P O.M.A.X.	U	N-W	AA	AB O.M.A.X.	AH	AJ	AK	BA	BB O.M.I.N.	BD O.M.A.X.	BF
48	5.75	3.62	3.00	2.12	2.75	.34 SLOT	5.83	5.66	.5000	1.50	1/2	-	1.69	3.750	3.000	2.50	.13	5.62	1/4-20
56	6.50	3.80	3.50	2.44	3.00	.34 SLOT	6.32	5.66	.6250	1.88	1/2	-	2.06	5.875	4.500	2.75	.13	6.50	3/8-16
56H	6.50	6.50	3.50	2.44	5.00	.34 SLOT	6.74	5.66	.6250	1.88	1/2	-	2.06	5.875	4.500	2.75	.13	6.50	3/8-16
143T	7.12	5.00	3.50	2.75	4.00	.34	7.47	7.98	.8750	2.25	3/4	6.91	2.12	5.875	4.500	2.25	.13	6.50	3/8-16
145T	7.12	6.00	3.50	2.75	5.00	.34	7.47	7.98	.8750	2.25	3/4	6.91	2.12	5.875	4.500	2.25	.13	6.50	3/8-16
182	8.88	5.50	4.50	3.75	4.50	.41	9.36	9.76	.8750	2.25	3/4	8.08	2.12	5.875	4.500	2.75	.13	6.50	3/8-16
184	8.88	6.50	4.50	3.75	5.50	.41	9.36	9.76	.8750	2.25	3/4	8.08	2.12	5.875	4.500	2.75	.13	6.50	3/8-16
182T	8.88	5.50	4.50	3.75	4.50	.41	9.36	9.76	1.1250	2.75	3/4	8.08	2.62	7.250	8.500	2.75	.25	9.00	1/2-13
184T	8.88	6.50	4.50	3.75	5.50	.41	9.36	9.76	1.1250	2.75	3/4	8.08	2.62	7.250	8.500	2.75	.25	9.00	1/2-13
213	10.38	7.00	5.25	4.25	5.50	.41	10.97	11.50	1.1250	3.00	1	9.45	2.75	7.250	8.500	3.50	.25	9.00	1/2-13
215	10.38	8.50	5.25	4.25	7.00	.41	10.97	11.50	1.1250	3.00	1	9.45	2.75	7.250	8.500	3.50	.25	9.00	1/2-13
213T	10.38	7.00	5.25	4.25	5.50	.41	10.97	11.50	1.3750	3.38	1	9.45	3.12	7.250	8.500	3.50	.25	9.00	1/2-13
215T	10.38	8.50	5.25	4.25	7.00	.41	10.97	11.50	1.3750	3.38	1	9.45	3.12	7.250	8.500	3.50	.25	9.00	1/2-13
254U	12.12	10.25	6.25	5.00	8.25	.53	14.07	14.27	1.3750	3.75	1-1/4	11.13	3.50	7.250	8.500	4.25	.25	10.00	1/2-13
256U	12.12	12.00	6.25	5.00	10.00	.53	14.07	14.27	1.3750	3.75	1-1/4	11.13	3.50	7.250	8.500	4.25	.25	10.00	1/2-13
254T	12.12	10.25	6.25	5.00	8.25	.53	14.07	14.27	1.625	4.00	1-1/4	11.13	3.75	7.250	8.500	4.25	.25	10.00	1/2-13
256T	12.12	12.00	6.25	5.00	10.00	.53	14.07	14.27	1.625	4.00	1-1/4	11.13	3.75	7.250	8.500	4.25	.25	10.00	1/2-13
284U	13.00	11.50	7.00	5.50	9.50	.53	14.90	15.88	1.625	4.88	1-1/2	13.18	4.62	9.000	10.500	4.75	.25	11.25	1/2-13
286U	13.00	13.00	7.00	5.50	11.00	.53	14.90	15.88	1.625	4.88	1-1/2	13.18	4.62	9.000	10.500	4.75	.25	11.25	1/2-13
284T	13.00	11.50	7.00	5.50	9.50	.53	14.90	15.88	1.875	4.62	1-1/2	13.18	4.38	9.000	10.500	4.75	.25	11.25	1/2-13
286T	13.00	13.00	7.00	5.50	11.00	.53	14.90	15.88	1.875	4.62	1-1/2	13.18	4.38	9.000	10.500	4.75	.25	11.25	1/2-13
284TS	13.00	11.50	7.00	5.50	9.50	.53	14.90	15.88	1.625	3.25	1-1/2	13.18	3.00	9.000	10.500	4.75	.25	11.25	1/2-13
286TS	13.00	13.00	7.00	5.50	11.00	.53	14.90	15.88	1.625	3.25	1-1/2	13.18	3.00	9.000	10.500	4.75	.25	11.25	1/2-13
324U	15.75	13.00	8.00	6.25	10.50	.66	17.10	18.25	1.875	5.62	2	14.81	5.38	11.000	12.500	5.25	.25	14.00	5/8-11
326U	15.75	14.50	8.00	6.25	12.00	.66	17.10	18.25	1.875	5.62	2	14.81	5.38	11.000	12.500	5.25	.25	14.00	5/8-11
324T	15.75	13.00	8.00	6.25	10.50	.66	17.10	18.25	2.125	5.25	2	14.81	5.00	11.000	12.500	5.25	.25	14.00	5/8-11
326T	15.75	14.50	8.00	6.25	12.00	.66	17.10	18.25	2.125	5.25	2	14.81	5.00	11.000	12.500	5.25	.25	14.00	5/8-11
324TS	15.75	13.00	8.00	6.25	10.50	.66	17.10	18.25	1.875	3.75	2	14.81	3.50	11.000	12.500	5.25	.25	14.00	5/8-11
326TS	15.75	14.50	8.00	6.25	12.00	.66	17.10	18.25	1.875	3.75	2	14.81	3.50	11.000	12.500	5.25	.25	14.00	5/8-11
364U	17.75	13.25	9.00	7.00	11.25	.66	18.95	20.00	2.125	6.38	2-1/2	17.85	6.12	11.000	12.500	5.88	.25	14.00	5/8-11
365U	17.75	14.25	9.00	7.00	12.25	.66	18.95	20.00	2.125	6.38	2-1/2	17.85	6.12	11.000	12.500	5.88	.25	14.00	5/8-11
364T	17.75	13.25	9.00	7.00	11.25	.66	18.95	20.00	2.375	5.88	2-1/2	17.85	5.62	11.000	12.500	5.88	.25	14.00	5/8-11
365T	17.75	14.25	9.00	7.00	12.25	.66	18.95	20.00	2.375	5.88	2-1/2	17.85	5.62	11.000	12.500	5.88	.25	14.00	5/8-11
364TS	17.75	13.25	9.00	7.00	11.25	.66	18.95	20.00	1.875	3.75	2-1/2	17.85	3.50	11.000	12.500	5.88	.25	14.00	5/8-11
365TS	17.75	14.25	9.00	7.00	12.25	.66	18.95	20.00	1.875	3.75	2-1/2	17.85	3.50	11.000	12.500	5.88	.25	14.00	5/8-11
404U	19.25	14.75	10.00	8.00	12.25	.81	20.88	21.75	2.375	7.12	3	18.75	6.88	11.000	12.500	6.62	.25	15.50	5/8-11
405U	19.25	16.25	10.00	8.00	13.75	.81	20.88	21.75	2.375	7.12	3	18.75	6.88	11.000	12.500	6.62	.25	15.50	5/8-11
404T	19.25	14.75	10.00	8.00	12.25	.81	20.88	21.75	2.875	7.25	3	18.75	7.00	11.000	12.500	6.62	.25	15.50	5/8-11
405T	19.25	16.25	10.00	8.00	13.75	.81	20.88	21.75	2.875	7.25	3	18.75	7.00	11.000	12.500	6.62	.25	15.50	5/8-11
404TS	19.25	14.75	10.00	8.00	12.25	.81	20.88	21.75	2.125	4.25	3	18.75	4.00	11.000	12.500	6.62	.25	15.50	5/8-11
405TS	19.25	16.25	10.00	8.00	13.75	.81	20.88	21.75	2.125	4.25	3	18.75	4.00	11.000	12.500	6.62	.25	15.50	5/8-11
444U	21.50	17.75	11.00	9.00	14.50	.81	24.19	26.31	2.875	8.62	3	20.94	8.38	14.000	16.000	7.50	.25	18.00	5/8-11
445U	21.50	19.75	11.00	9.00	16.50	.81	24.19	26.31	2.875	8.62	3	20.94	8.38	14.000	16.000	7.50	.25	18.00	5/8-11
444T	21.50	17.75	11.00	9.00	14.50	.81	24.19	26.31	3.375	8.50	3	20.94	8.25	14.000	16.000	7.50	.25	18.00	5/8-11
445T	21.50	19.75	11.00	9.00	16.50	.81	24.19	26.31	3.375	8.50	3	20.94	8.25	14.000	16.000	7.50	.25	18.00	5/8-11
444TS	21.50	17.75	11.00	9.00	14.50	.81	24.19	26.31	2.375	4.75	3	20.94	4.50	14.000	16.000	7.50	.25	18.00	5/8-11
445TS	21.50	19.75	11.00	9.00	16.50	.81	24.19	26.31	2.375	4.75	3	20.94	4.50	14.000	16.000	7.50	.25	18.00	5/8-11
447T	21.50	28.25	11.00	9.00	20.00	.81	24.22	26.31	3.375	8.50	3	25.90	8.25	14.000	16.000	7.50	.25	18.00	5/8-11
449T	21.50	28.25	11.00	9.00	25.00	.81	24.22	26.31	3.375	8.50	3	25.90	8.25	14.000	16.000	7.50	.25	18.00	5/8-11
447TS	21.50	28.25	11.00	9.00	20.00	.81	24.22	26.31	2.375	4.75	4 NPT	25.90	4.50	14.000	16.000	7.50	.25	18.00	5/8-11
449TS	21.50	28.25	11.00	9.00	25.00	.81	24.22	26.31	2.375	4.75	4 NPT	25.90	4.50	14.000	16.000	7.50	.25	18.00	5/8-11

APPROVAL for CONSTRUCTION

Type _____ Frame _____ Part No. _____ Spec. _____
 HP _____ RPM _____ Volts _____ Phase _____
 Certified for: _____
 Customer Order No. _____
 Yaskawa Order No. _____ By _____ Date _____

Dimensions
microMAX



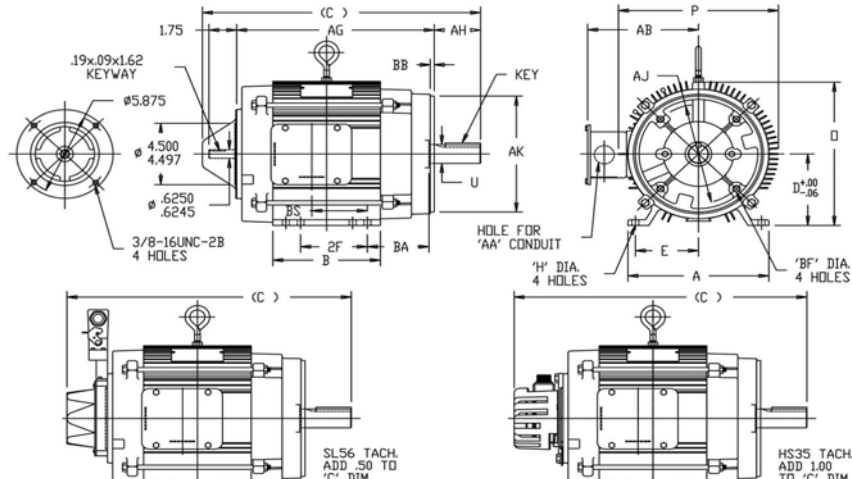
FRAME	D	E	2F	H	O MAX.	P MAX.	U	AA	AB MAX.	AG MAX.	AH	AJ	AK	BA	BB	BF	BS	KEY
56C	3.50	2.44	3.00	.35	6.35	5.69	.625	--	5.56	7.40	2.06	5.875	4.500	2.75	.16	3/8-16	5.25	.19x.19x1.38
145TC	3.50	2.75	5.00	.35	6.71	6.48	.875	--	5.56	11.61	2.12	5.875	4.500	2.75	.16	3/8-16	5.93	.19x.19x1.38
182TC	4.50	3.75	4.50	.44	9.38	9.78	1.125	1.09	7.02	13.00	2.62	7.250	8.500	3.50	.25	1/2-13	3.25	.25x.25x1.75

APPROVAL for CONSTRUCTION

Type _____ Frame _____ Part No. _____ Spec. _____
 HP _____ RPM _____ Volts _____ Phase _____
 Certified for: _____
 Customer Order No. _____
 Yaskawa Order No. _____ By _____ Date _____



Dimensions BlackMAX

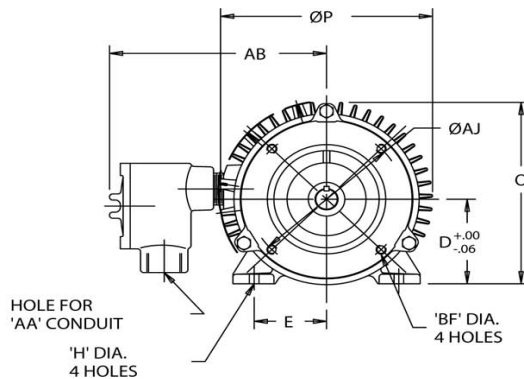
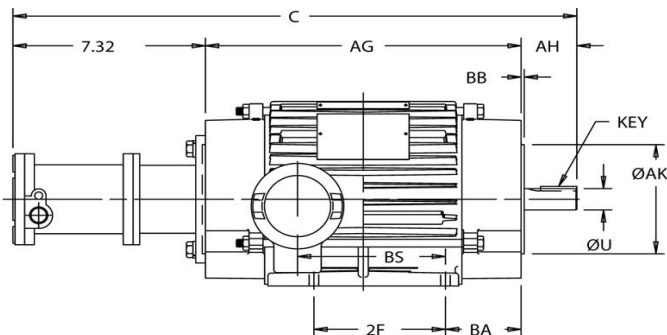


FRAME	CONSTRUCTION	A MAX.	B MAX.	C MAX.	D	E	2F	H	Ø MAX.	P MAX.	U	AA	AB MAX.	AG MAX.	AH	AJ	AK	BA	BB	BF	BS	KEY
56C	ROLLED STEEL	6.50	4.00	14.98	3.50	2.44	3.00	.35	6.71	6.48	.625	-	5.56	10.61	2.06	5.875	4.500	2.75	.13	3/8-16	5.25	.19x.19x1.38
143TC	ROLLED STEEL	6.50	6.50	15.04	3.50	2.75	4.00	.35	6.71	6.48	.875	-	5.56	10.61	2.12	5.875	4.500	2.75	.13	3/8-16	4.93	.19x.19x1.38
143TC	CAST IRON	7.12	5.00	13.68	3.50	2.75	4.00	.38	7.45	7.98	.8750	1.09	7.04	9.25	2.12	5.875	4.500	2.62	.13	3/8-16	2.81	.19x.19x1.38
145TC	ROLLED STEEL	6.50	6.50	16.04	3.50	2.75	5.00	.35	6.71	6.48	.875	-	5.56	11.61	2.12	5.875	4.500	2.75	.13	3/8-16	5.93	.19x.19x1.38
145TC	CAST IRON	7.12	6.00	14.68	3.50	2.75	5.00	.35	7.45	7.98	.875	1.09	7.04	10.25	2.12	5.875	4.500	2.62	.13	3/8-16	3.81	.19x.19x1.38
182TC	ALUMINUM	8.50	7.75	17.94	4.50	3.75	4.50	.44	9.38	9.78	1.125	1.09	7.02	13.00	2.62	7.250	8.500	3.50	.27	1/2-13	3.25	.25x.25x1.75
182TC	CAST IRON	8.88	5.50	16.12	4.50	3.75	4.50	.41	9.36	9.76	1.1250	1.09	8.08	11.75	2.62	7.250	8.500	3.50	.27	1/2-13	2.25	.25x.25x1.75
184TC	ALUMINUM	8.50	7.75	19.94	4.50	3.75	5.50	.44	9.38	9.78	1.125	1.09	7.02	15.00	2.62	7.250	8.500	3.50	.27	1/2-13	4.25	.25x.25x1.75
184TC	CAST IRON	8.88	6.50	17.12	4.50	3.75	5.50	.41	9.36	9.76	1.1250	1.09	8.08	12.75	2.62	7.250	8.500	3.50	.27	1/2-13	2.75	.25x.25x1.75
213TC	ALUMINUM	9.50	8.75	20.24	5.25	4.25	5.50	.44	10.62	10.78	1.375	1.34	7.50	14.81	3.12	7.250	8.500	4.25	.28	1/2-13	5.25	.31x.31x2.38
213TC	CAST IRON	10.38	8.50	20.56	5.25	4.25	5.50	.44	10.97	11.50	1.3750	1.09	9.31	15.12	3.12	7.250	8.500	4.25	.27	1/2-13	3.50	.31x.31x2.38
215TC	ALUMINUM	9.50	11.75	23.24	5.25	4.25	7.00	.44	10.62	10.78	1.375	1.34	7.50	17.81	3.12	7.250	8.500	4.25	.28	1/2-13	9.25	.31x.31x2.38
215TC	CAST IRON	10.38	11.50	22.74	5.25	4.25	7.00	.44	10.97	11.50	1.3750	1.09	9.31	17.31	3.12	7.250	8.500	4.25	.27	1/2-13	6.18	.31x.31x2.38
254TC	ALUMINUM	11.50	14.50	26.87	6.25	5.00	8.25	.56	11.62	10.78	1.625	1.75	8.10	20.81	3.75	7.250	8.500	4.75	.27	1/2-13	10.40	.38x.38x2.88
254TC	CAST IRON	12.12	12.00	25.12	6.25	5.00	8.25	.53	14.09	14.27	1.625	1.25	9.83	19.06	3.75	7.250	8.500	4.75	.27	1/2-13	4.12	.38x.38x2.88
256TC	ALUMINUM	11.50	16.25	26.87	6.25	5.00	10.00	.56	11.62	10.78	1.625	1.75	8.10	20.81	3.75	7.250	8.500	4.75	.27	1/2-13	10.40	.38x.38x2.88
256TC	CAST IRON	12.18	12.00	24.88	6.25	5.00	10.00	.56	14.09	14.27	1.625	1.25	11.08	18.82	3.75	7.250	8.500	4.75	.27	1/2-13	5.00	.38x.38x2.88
284TC	CAST IRON	13.00	13.00	27.25	7.00	5.50	9.50	.56	14.16	14.32	1.875	1.50	12.31	20.57	4.38	9.000	10.500	4.75	.27	1/2-13	5.50	.50x.50x3.25

APPROVAL for CONSTRUCTION

Type _____ Frame _____ Part No. _____ Spec. _____
 HP _____ RPM _____ Volts _____ Phase _____
 Certified for: _____
 Customer Order No. _____
 Yaskawa Order No. _____ By _____ Date _____

Dimensions BlackMAX Explosion Proof



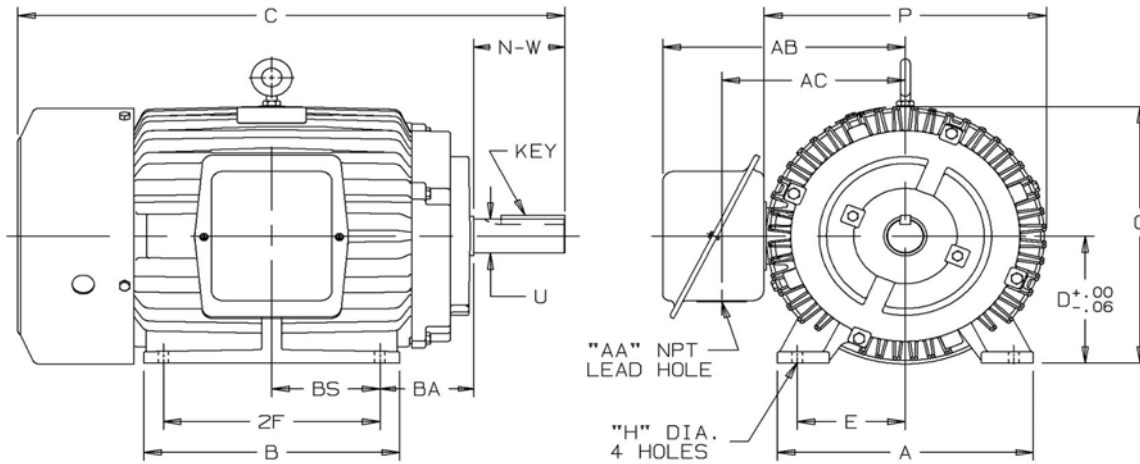
FRAME	D	E	2F	H	O MAX.	P MAX.	U	AA	AB MAX.	AG MAX.	AH	AJ	AK	BA	BB	BF	BS	KEY
143TC	3.50	2.75	4.00	.34	7.48	8.06	.875	.50	8.25	12.00	2.12	5.875	4.500	2.88	.13	3/8-16	5.62	.19x.19x1.38
145TC	3.50	2.75	5.00	.34	7.48	8.06	.875	.50	8.25	12.00	2.12	5.875	4.500	2.88	.13	3/8-16	5.62	.19x.19x1.38
182TC	4.50	3.75	4.50	.41	11.61	9.76	1.125	.75	9.34	14.94	2.62	7.250	8.500	3.50	.27	1/2-13	2.75	.25x.25x1.75
213TC	5.25	4.25	5.50	.41	13.62	11.50	1.375	.75	10.94	24.30	3.12	7.250	8.500	4.25	.28	1/2-13	4.12	.31x.31x2.38
254TC	6.25	5.00	8.25	.53	14.09	14.27	1.625	1.25	13.67	18.25	3.75	7.250	8.500	4.75	.28	1/2-13	4.12	.38x.38x2.88
284TC	7.00	5.50	9.50	.53	15.57	15.89	1.875	1.50	16.44	28.78	4.38	9.000	10.500	4.75	.27	1/2-13	4.75	.50x.50x3.25

APPROVAL for CONSTRUCTION

Type _____ Frame _____ Part No. _____ Spec. _____
 HP _____ RPM _____ Volts _____ Phase _____
 Certified for: _____
 Customer Order No. _____
 Yaskawa Order No. _____ By _____ Date _____



Dimensions BlueMAX TEFC



SEVERE DUTY SHOWN

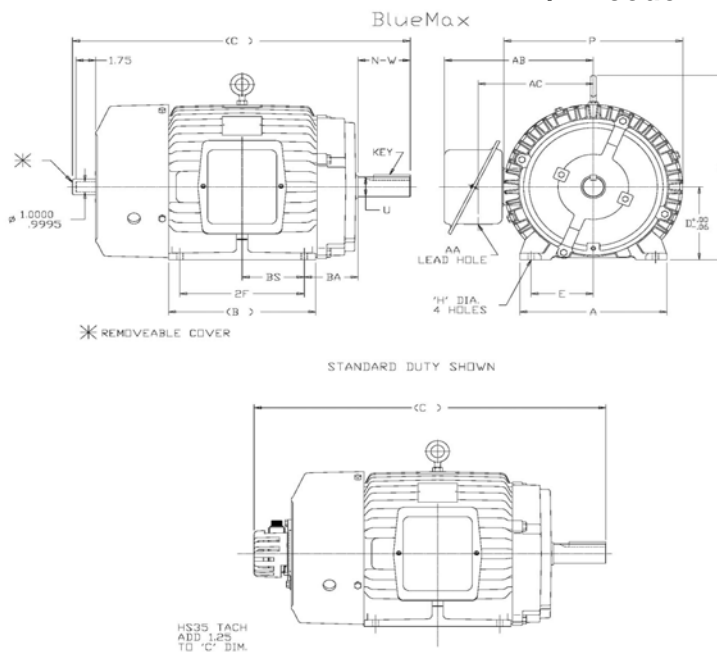
FRAME	ENCL.	A (MAX)	B (MAX)	C (MAX)	D	E	2F	H	O (MAX)	P (MAX)	U	AA (NPT)	AB (MAX)	AC (MAX)	BA	BS	N-W	KEY
143T	TENV	7.12	5.00	10.43	3.50	2.25	4.00	.34	7.45	7.98	.875	3/4	7.04	5.38	2.25	2.81	2.25	.19x.19x1.38
143T	TEFC	7.12	5.00	11.92	3.50	2.25	4.00	.34	7.45	7.98	.875	3/4	6.91	5.38	2.25	2.81	2.25	.19x.19x1.38
145T	TENV	7.12	6.00	11.43	3.50	2.25	5.00	.34	7.45	7.98	.875	3/4	7.04	5.38	2.25	3.81	2.25	.19x.19x1.38
145T	TEFC	7.12	6.00	12.92	3.50	2.25	5.00	.34	7.45	7.98	.875	3/4	6.91	2.38	2.25	3.81	2.25	.19x.19x1.38
182T	TENV	8.88	5.50	12.71	4.50	3.75	4.50	.41	9.38	9.76	1.125	3/4	8.08	6.47	2.75	2.25	2.75	.25x.25x1.75
182T	TEFC	8.88	5.50	15.19	4.50	3.75	4.50	.41	9.38	9.76	1.125	3/4	8.01	6.47	2.75	2.25	2.75	.25x.25x1.75
184T	TENV	8.88	6.50	13.71	4.50	3.75	5.50	.41	9.38	9.76	1.125	3/4	8.08	6.47	2.75	2.75	2.75	.25x.25x1.75
184T	TEFC	8.88	6.50	16.19	4.50	3.75	5.50	.41	9.38	9.76	1.125	3/4	8.01	6.47	2.75	2.75	2.75	.25x.25x1.75
213T	TENV	10.38	7.00	15.69	5.25	4.25	5.50	.44	11.00	11.50	1.375	3/4	9.31	7.69	3.50	2.75	3.38	.31x31x2.38
213T	TEFC	10.38	7.00	18.22	5.25	4.25	5.50	.44	11.00	11.50	1.375	3/4	9.31	7.69	3.50	2.75	3.38	.31x31x2.38
215T	TENV	10.38	8.50	17.19	5.25	4.25	7.00	.44	11.00	11.50	1.375	3/4	9.31	7.69	3.50	3.50	3.38	.31x31x2.38
215T	TEFC	10.38	8.50	19.72	5.25	4.25	7.00	.44	11.00	11.50	1.375	3/4	9.31	7.69	3.50	3.50	3.38	.31x31x2.38
254T	TEFC	12.12	10.25	23.52	6.25	5.00	8.25	.53	14.09	14.27	1.625	1 1/4	12.00	9.50	4.25	4.12	4.00	.38x.38x2.88
256T	TEFC	12.12	12.00	25.27	6.25	5.00	10.00	.53	14.09	14.27	1.625	1 1/4	12.00	9.50	4.25	5.00	4.00	.38x.38x2.88
284T	TEFC	13.00	11.50	27.88	7.00	5.50	9.50	.53	14.94	15.88	1.875	1 1/2	12.50	10.00	4.75	4.75	4.62	.50x.50x3.25
286T	TEFC	13.00	13.00	27.88	7.00	5.50	11.00	.53	14.94	15.88	1.875	1 1/2	12.50	10.00	4.75	4.75	4.62	.50x.50x3.25
324T	TEFC	15.75	13.00	28.88	8.00	6.25	10.50	.66	15.93	15.88	2.125	2	14.44	11.31	5.25	5.25	5.25	.50x.50x3.88
326T	TEFC	15.75	14.50	30.38	8.00	6.25	12.00	.66	15.93	15.88	2.125	2	14.44	11.31	5.25	6.00	5.25	.50x.50x3.88
364T	TEFC	17.75	13.25	31.50	9.00	7.00	11.25	.66	19.00	20.00	2.375	3	17.88	13.88	5.88	5.62	5.88	.62x.62x4.25
365T	TEFC	17.75	14.25	32.50	9.00	7.00	12.25	.66	19.00	20.00	2.375	3	17.88	13.88	5.88	6.12	5.88	.62x.62x4.25
404T	TEFC	19.25	14.75	35.62	10.00	8.00	12.25	.81	20.88	21.75	2.875	3	18.75	14.75	6.62	6.12	7.25	.75x.75x5.62
405T	TEFC	19.25	16.25	37.12	10.00	8.00	13.75	.81	20.88	21.75	2.875	3	19.75	16.25	6.62	6.88	7.25	.75x.75x5.62
444T	TEFC	21.50	17.75	41.19	11.00	9.00	14.50	.81	24.19	26.31	3.375	3	20.94	17.38	7.50	7.25	8.50	.88x.88x6.88
445T	TEFC	21.50	19.75	43.19	11.00	9.00	16.50	.81	24.19	26.31	3.375	3	20.94	17.38	7.50	8.25	8.50	.88x.88x6.88
447T	TEFC	21.50	28.25	51.69	11.00	9.00	20.00	.81	24.22	26.31	3.375	4	25.90	19.31	7.50	1.78	8.50	.88x.88x6.88
449T	TEFC	21.50	28.25	51.69	11.00	9.00	25.00	.81	24.22	26.31	3.375	4	25.90	19.31	7.50	1.78	8.50	.88x.88x6.88

APPROVAL for CONSTRUCTION

Type _____ Frame _____ Part No. _____ Spec. _____
 HP _____ RPM _____ Volts _____ Phase _____
 Certified for: _____
 Customer Order No. _____
 Yaskawa Order No. _____ By _____ Date _____

Dimensions BlueMAX TEFC, w/ Encoder Provisions

MTR



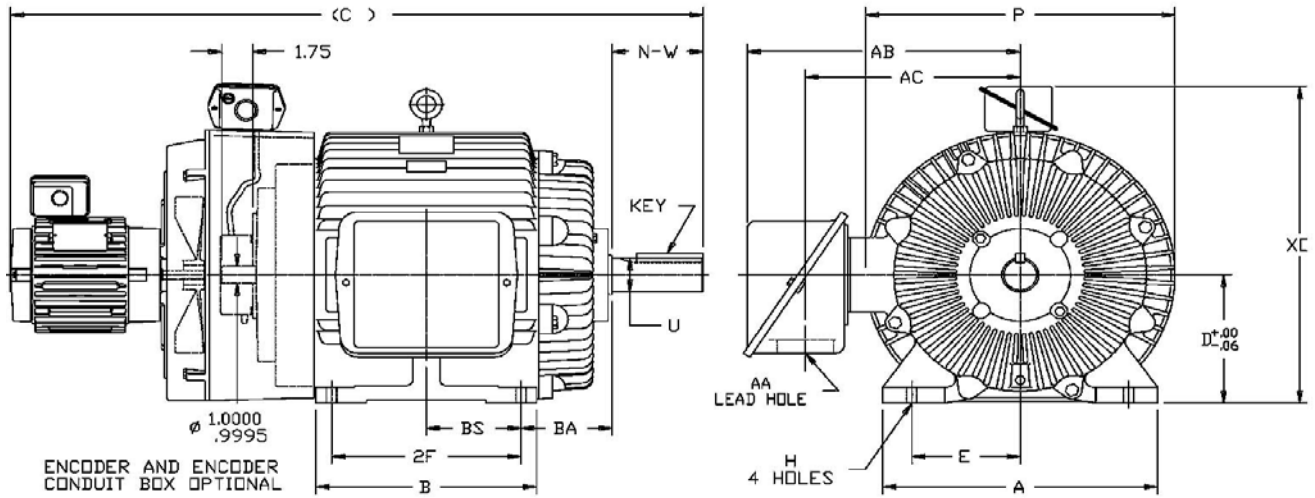
FRAME	D	E	2F	H	Ø (MAX)	P (MAX)	U	AA	AB (MAX)	AC (MAX)	BA	BS	N-W	KEY
184T	4.50	3.75	5.50	.41	12.07	9.76	1.12	1.09	8.08	6.47	3.50	2.75	2.75	.25x.25x1.75
213T	5.25	4.25	5.50	.44	13.22	11.50	1.38	1.09	9.45	7.69	4.25	2.75	3.38	.31x.31x2.38
215T	5.25	4.25	7.00	.44	13.22	11.50	1.38	1.09	9.45	7.69	4.25	3.50	3.38	.31x.31x2.38
254T	6.25	5.00	8.25	.53	14.07	14.27	1.62	1.25	11.13	9.32	4.25	4.12	4.00	.38x.38x2.88
256T	6.25	5.00	10.00	.53	14.07	14.27	1.62	1.25	11.13	9.32	4.25	5.00	4.00	.38x.38x2.88
284T	7.00	5.50	9.50	.53	18.02	15.88	1.88	1.50	13.18	9.31	4.75	4.75	4.62	.50x.50x3.25
284TS	7.00	5.50	9.50	.53	18.02	15.88	1.62	1.50	13.18	9.31	4.75	4.75	3.25	.38x.38x1.88
286T	7.00	5.50	11.00	.53	18.02	15.88	1.88	1.50	13.18	9.31	4.75	5.50	4.62	.50x.50x3.25
286TS	7.00	5.50	11.00	.53	18.02	15.88	1.62	1.50	13.18	9.31	4.75	5.50	3.25	.38x.38x1.88
324T	8.00	6.25	10.50	.66	20.22	18.25	2.12	2.00	14.81	10.69	5.25	5.25	5.25	.50x.50x3.88
324TS	8.00	6.25	10.50	.66	20.22	18.25	1.88	2.00	14.81	10.69	5.25	5.25	3.75	.50x.50x2.00
326T	8.00	6.25	12.00	.66	20.22	18.25	2.12	2.00	14.81	10.69	5.25	6.00	5.25	.50x.50x3.88
326TS	8.00	6.25	12.00	.66	20.22	18.25	1.88	2.00	14.81	10.69	5.25	6.00	3.75	.50x.50x2.00
364T	9.00	7.00	11.25	.66	22.57	20.00	2.38	3.62	17.85	14.56	5.88	5.62	5.88	.62x.62x4.25
364TS	9.00	7.00	11.25	.66	22.57	20.00	1.88	3.62	17.85	14.56	5.88	5.62	3.75	.50x.50x2.00
365T	9.00	7.00	12.25	.66	22.57	20.00	2.38	3.62	17.85	14.56	5.88	6.12	5.88	.62x.62x4.25
365TS	9.00	7.00	12.25	.66	22.57	20.00	1.88	3.62	17.85	14.56	5.88	6.12	3.75	.50x.50x2.00
404T	10.00	8.00	12.25	.81	23.87	21.75	2.88	3.62	18.75	14.75	6.62	6.12	7.25	.75x.75x5.62
404TS	10.00	8.00	12.25	.81	23.87	21.75	2.12	3.62	18.75	14.75	6.62	6.12	4.25	.50x.50x2.75
405T	10.00	8.00	13.75	.81	23.87	21.75	2.88	3.62	18.75	16.25	6.62	6.88	7.25	.75x.75x5.62
405TS	10.00	8.00	13.75	.81	23.87	21.75	2.12	3.62	18.75	16.25	6.62	6.88	4.25	.50x.50x2.75
444T	11.00	9.00	14.50	.81	28.38	26.31	3.38	3.62	20.94	17.38	7.50	7.25	8.50	.88x.88x6.88
444TS	11.00	9.00	14.50	.81	28.38	26.31	2.38	3.62	20.94	17.38	7.50	7.25	4.75	.62x.62x3.00
445T	11.00	9.00	16.50	.81	28.38	26.31	3.38	3.62	20.94	17.38	7.50	8.25	8.50	.88x.88x6.88
445TS	11.00	9.00	16.50	.81	28.38	26.31	2.38	3.62	20.94	17.38	7.50	8.25	4.75	.62x.62x3.00
449T	11.00	9.00	25.00	.81	24.22	26.31	3.38	4.62	25.90	19.31	7.50	1.78	8.50	.88x.88x6.88
449TS	11.00	9.00	25.00	.81	24.22	26.31	2.38	4.62	25.90	19.31	7.50	1.78	4.75	.62x.62x3.00

APPROVAL for CONSTRUCTION

Type _____ Frame _____ Part No. _____ Spec. _____
 HP _____ RPM _____ Volts _____ Phase _____
 Certified for: _____
 Customer Order No. _____
 Yaskawa Order No. _____ By _____ Date _____



Dimensions
BlueMAX TEBC

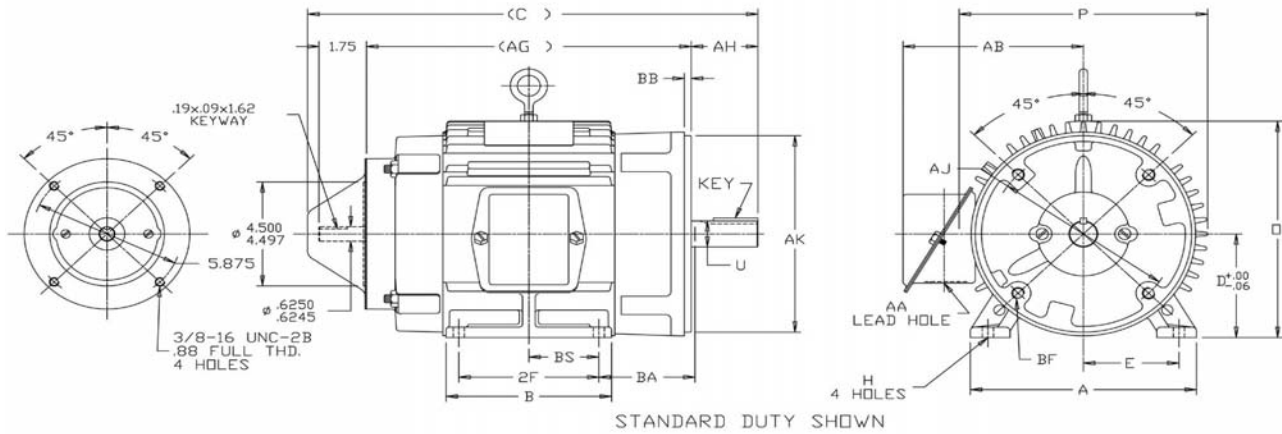


STANDARD DUTY SHOWN

FRAME	D	E	2F	H	XD (MAX)	P (MAX)	U	AA	AB (MAX)	AC (MAX)	BA	BS	N-W	KEY
213T	5.25	4.25	5.50	.44	13.35	11.50	1.38	1.09	9.45	7.69	3.50	2.75	3.38	.31x.31x2.38
215T	5.25	4.25	7.00	.44	13.35	11.50	1.38	1.09	9.45	7.69	3.50	3.50	3.38	.31x.31x2.38
254T	6.25	5.00	8.25	.53	16.31	14.27	1.62	1.25	11.13	9.32	4.25	4.12	4.00	.38x.38x2.88
256T	6.25	5.00	10.00	.53	16.31	14.27	1.62	1.25	11.13	9.32	4.25	5.00	4.00	.38x.38x2.88
284T	7.00	5.50	9.50	.53	17.88	15.88	1.88	1.50	13.18	9.31	4.75	4.75	4.62	.50x.50x3.25
284TS	7.00	5.50	9.50	.53	17.88	15.88	1.62	1.50	13.18	9.31	4.75	4.75	3.25	.38x.38x1.88
286T	7.00	5.50	11.00	.53	17.88	15.88	1.88	1.50	13.18	9.31	4.75	5.50	4.62	.50x.50x3.25
286TS	7.00	5.50	11.00	.53	17.88	15.88	1.62	1.50	13.18	9.31	4.75	5.50	3.25	.38x.38x1.88
324T	8.00	6.25	10.50	.66	20.25	18.25	2.12	2.00	14.81	10.69	5.25	5.25	5.25	.50x.50x3.88
324TS	8.00	6.25	10.50	.66	20.25	18.25	1.88	2.00	14.81	10.69	5.25	5.25	3.75	.50x.50x2.00
326T	8.00	6.25	12.00	.66	20.25	18.25	2.12	2.00	14.81	10.69	5.25	6.00	5.25	.50x.50x3.88
326TS	8.00	6.25	12.00	.66	20.25	18.25	1.88	2.00	14.81	10.69	5.25	6.00	3.75	.50x.50x2.00
364T	9.00	7.00	11.25	.66	22.62	20.00	2.38	3.62	17.85	14.56	5.88	5.62	5.88	.62x.62x4.25
364TS	9.00	7.00	11.25	.66	22.62	20.00	1.88	3.62	17.85	14.56	5.88	5.62	3.75	.50x.50x2.00
365T	9.00	7.00	12.25	.66	22.62	20.00	2.38	3.62	17.85	14.56	5.88	6.12	5.88	.62x.62x4.25
365TS	9.00	7.00	12.25	.66	22.62	20.00	1.88	3.62	17.85	14.56	5.88	6.12	3.75	.50x.50x2.00
404T	10.00	8.00	12.25	.81	24.06	21.75	2.88	3.62	18.75	14.75	6.62	6.12	7.25	.75x.75x5.62
404TS	10.00	8.00	12.25	.81	24.06	21.75	2.12	3.62	18.75	14.75	6.62	6.12	4.25	.50x.50x2.75
405T	10.00	8.00	13.75	.81	24.06	21.75	2.88	3.62	18.75	16.25	6.62	6.88	7.25	.75x.75x5.62
405TS	10.00	8.00	13.75	.81	24.06	21.75	2.12	3.62	18.75	16.25	6.62	6.88	4.25	.50x.50x2.75
444T	11.00	9.00	14.50	.81	26.95	26.31	3.38	3.62	20.94	17.38	7.50	7.25	8.50	.88x.88x6.88
444TS	11.00	9.00	14.50	.81	26.95	26.31	2.38	3.62	20.94	17.38	7.50	7.25	4.75	.62x.62x3.00
445T	11.00	9.00	16.50	.81	26.95	26.31	3.38	3.62	20.94	17.38	7.50	8.25	8.50	.88x.88x6.88
445TS	11.00	9.00	16.50	.81	26.95	26.31	2.38	3.62	20.94	17.38	7.50	8.25	4.75	.62x.62x3.00
449T	11.00	9.00	25.00	.81	27.03	26.31	3.38	4.62	25.90	19.31	7.50	1.78	8.50	.88x.88x6.88
449TS	11.00	9.00	25.00	.81	27.03	26.31	2.38	4.62	25.90	19.31	7.50	1.78	4.75	.62x.62x3.00

APPROVAL for CONSTRUCTION

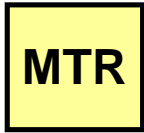
Type _____ Frame _____ Part No. _____ Spec. _____
 HP _____ RPM _____ Volts _____ Phase _____
 Certified for: _____
 Customer Order No. _____
 Yaskawa Order No. _____ By _____ Date _____



FRAME	A MAX.	B MAX.	C MAX.	D	E	2F	H	Ø MAX.	P MAX.	U	AA	AB MAX.	AG MAX.	AH	AJ	AK	BA	BB	BF	BS	KEY
143TC	7.12	5.00	13.68	3.50	2.75	4.00	.38	7.45	11.03	.8750	1.09	7.04	9.25	2.12	5.875	4.500	2.62	.13	3/8-16	2.81	.19x.19x1.38
145TC	7.12	6.00	14.68	3.50	2.75	5.00	.38	7.45	11.03	.8750	1.09	7.04	10.25	2.12	5.875	4.500	2.62	.13	3/8-16	3.81	.19x.19x1.38
182TC	8.88	5.50	16.12	4.50	3.75	4.50	.41	11.62	12.96	1.1250	1.09	8.01	11.75	2.62	7.250	8.500	3.50	.27	1/2-13	2.25	.25x.25x1.75
184TC	8.88	6.50	17.12	4.50	3.75	5.50	.41	11.62	12.96	1.1250	1.09	8.01	12.75	2.62	7.250	8.500	3.50	.27	1/2-13	2.75	.25x.25x1.75
213TC	10.38	8.50	20.56	5.25	4.25	5.50	.44	13.32	15.01	1.3750	1.09	9.31	15.12	3.12	7.250	8.500	4.25	.27	1/2-13	3.50	.31x.31x2.38
215TC	10.38	11.50	22.74	5.25	4.25	7.00	.44	13.91	15.19	1.3750	1.09	9.04	17.31	3.12	7.250	8.500	4.25	.27	1/2-13	6.18	.31x.31x2.38
254TC	12.12	12.00	25.12	6.25	5.00	8.25	.53	15.66	15.98	1.625	1.25	9.83	19.06	3.75	7.250	8.500	4.75	.27	1/2-13	6.31	.38x.38x2.88
256TC	12.18	12.00	25.12	6.25	5.00	10.00	.53	14.07	15.98	1.625	1.25	11.08	19.06	3.75	7.250	8.500	4.75	.27	1/2-13	5.00	.38x.38x2.88

APPROVAL for CONSTRUCTION

Type _____ Frame _____ Part No. _____ Spec. _____
 HP _____ RPM _____ Volts _____ Phase _____
 Certified for: _____
 Customer Order No. _____
 Yaskawa Order No. _____ By _____ Date _____



Performance Data

microMAX, Black MAX 1000:1, & Black MAX XP

All performance data based on sine wave tests

microMAX 20:1 and 1000:1 Constant Torque Motors (all data at 460 Volt)

HP	FL RPM	MIN. RPM	ENCL	NEMA FRAME	FL AMPS 460V	NL AMPS 460V	FL TORQUE (LB-FT)	BD TORQUE (LB-FT)	MAX CHP RPM ⁽¹⁾	FL EFFICIENCY	FL POWER FACTOR	OHMS/PHASE - Equivalent Wye Circuit (at rated operating temp. in a 40 C ambient)					ROTOR INERTIA (LB-FT ²)
												R1	R2	X1	X2	XM	
1/8	1750	0	TENV	56C	0.3	0.3	0.4	2.5	3550	65.5	55	55.6	39.72	51.2	22.68	896.32	0.040
1/4	1725	0	TENV	56C	0.5	0.3	0.8	3.7	3520	72	65	37	28.604	36.32	17.136	681	0.040
1/3	1740	0	TENV	56C	0.6	0.4	1	4.5	3520	74	67	26.16	22.96	30.1	14.62	572.8	0.045
1/2	1730	0	TENV	56C	0.9	0.5	1.5	6.8	3520	80	72	18.144	17.576	22.112	12.756	521.804	0.075
3/4	1725	90	TEFC	56C	1.4	0.9	2.3	9.5	3520	75.5	70.5	13.984	12.588	15.608	8.316	292.572	0.055
1	1725	90	TEFC	56C	1.6	0.9	3	12	3520	78.5	77.5	10.82	10.936	12.356	7.468	292.52	0.090
1.5	1755	0	TENV	145TC	2.4	1.6	4.5	29	3518	85.5	69	4.256	3.536	5.996	5.884	161.008	0.140
2	1740	90	TEFC	145TC	2.9	1.6	6	29	3530	82.5	77	4.244	3.336	6.008	5.88	161.88	0.140
3	1735	90	TEFC	182TC	4.2	2.5	9	35	3540	87.5	76	2.78	1.58	5.23	7.1	98.4	0.300
5	1750	90	TEFC	184TC	6.7	7	15	61	3480	88.5	79	1.688	1.168	3.256	4.792	77.68	0.450
7.5	1750	90	TEFC	213TC	10.7	6.2	22.3	80	3565	89.5	72.5	0.707	0.488	2.39	3.2	41.4	0.750
10	1750	90	TEFC	215TC	14	7.8	30	110	3570	91	74	0.454	0.355	1.68	2.5	33.4	1.000

Black Max 1000:1 Constant Torque Motors (all data at 460 Volt)

HP	FL RPM	MIN. RPM	ENCL	NEMA FRAME	FL AMPS 460V	NL AMPS 460V	FL TORQUE (LB-FT)	BD TORQUE (LB-FT)	MAX CHP RPM ⁽¹⁾	FL EFFICIENCY	FL POWER FACTOR	OHMS/PHASE - Equivalent Wye Circuit (at rated operating temp. in a 40 C ambient)					ROTOR INERTIA (LB-FT ²)
												R1	R2	X1	X2	XM	
1/4	1755	0	TENV	56C	0.6	0.45	0.75	4.5	3540	70	58	26.3	23	30.24	14.7	572	0.045
1/3	1740	0	TENV	56C	0.6	0.45	1	4.5	3520	74	67	26.144	23	30.1	14.62	573	0.045
1/2	1735	0	TENV	56C	0.8	0.52	1.5	5.8	3510	80	72	22.307	17.028	24.123	18.163	532.976	0.056
1	1750	0	TENV	6C-143T	1.5	1	3	15	3505	84	75	8.378	5.623	10.707	9.912	278.036	0.110
	1145	0	TENV	145TC	1.9	1.3	4.5	16	2260	80	62.5	10.302	8.372	13.793	15.325	193.835	0.140
1.5	1755	0	TENV	145TC	2.4	1.6	4.5	29	3518	85.5	69	4.257	3.538	5.998	5.884	161.009	0.140
2	1750	0	TENV	145TC	3	1.7	6	28.5	3525	85.5	78	3.834	2.897	5.95	5.637	154.8	0.130
	1160	0	TENV	184TC	3.3	2.1	9	34	2315	82.5	67.5	3.948	3.436	7.725	12.113	116.9	0.380
3	1755	0	TENV	182TC	4.2	2.2	9	48	3515	85.5	80	2.356	1.731	4.266	4.304	123.93	0.420
	1158	0	TENV	213TC	4.7	3	13.6	49	2300	82.5	72.5	2.469	2.318	6.508	4.125	83.91	0.600
5	1765	0	TENV	184TC	7	4.2	14.8	70	3555	89.5	74.5	1.242	0.947	2.534	4.236	64.128	0.550
	1165	0	TENV	215TC	7.7	4.8	22.5	87	2320	84	71	1.13	1.25	3.709	2.573	51.972	0.900
7.5	1765	0	TENV	213TC	10.5	5.5	22.3	95.5	3525	90.2	76	0.699	0.567	1.765	2.26	38.178	0.850
	1170	0	TENV	254TC	11	6	34	118	2325	87.5	73	0.51	0.68	2.846	3.247	42.714	1.200
10	1774	0	TENV	215TC	13.5	7.4	29.5	125	3540	90.2	76	0.369	0.334	1.423	2.281	34.932	1.300
	1160	0	TENV	256TC	14	7	45.5	135	2320	89.5	75.5	0.534	0.693	2.258	2.323	30.53	1.500
15	1765	0	TENV	254TC	20	11	45	170	3550	92.4	76	0.134	0.316	1.047	1.569	22.151	1.600
20	1768	0	TENV	256TC	25	13.5	59.5	290	3560	93.6	80	0.234	0.213	0.746	0.689	18.204	3.100
25	1770	0	TENV	284TC	31	14	74.2	330	3530	93.6	75	0.143	0.16	0.724	0.678	13.965	4.400
30	1772	0	TENV	286TC	40	23.5	89	375	3560	94.5	74	0.113	0.123	0.543	0.557	11.2	5.500

Black Max Explosion Proof 1000:1 Constant Torque Motors (all data at 460 Volt)

HP	FL RPM	MIN. RPM	ENCL	NEMA FRAME	FL AMPS 460V	NL AMPS 460V	FL TORQUE (LB-FT)	BD TORQUE (LB-FT)	MAX CHP RPM ⁽¹⁾	FL EFFICIENCY	FL POWER FACTOR	OHMS/PHASE - Equivalent Wye Circuit (at rated operating temp. in a 40 C ambient)					ROTOR INERTIA (LB-FT ²)
												R1	R2	X1	X2	XM	
1/4	1725	0	EPNV	56C	0.55	0.4	0.75	3.7	1725	71	61.5	34.01	21.99	32.3	19.3	533.95	0.038
1/3	1725	0	EPNV	56C	0.6	0.4	1	3.7	1725	74.5	71	34.57	24.08	36.55	24.25	675.96	0.038
1/2	1735	0	EPNV	56C	0.8	0.52	1.5	5.8	1735	80	72	22.31	17.02	24.12	18.62	532.98	0.056
3/4	1755	0	EPNV	56C	1.2	0.75	2.25	10.2	1755	82.5	73.5	11	7.41	13.27	12.21	339.82	0.090
1	1750	0	EPNV	56C	1.5	1	3	15	1750	84	75	8.38	5.62	10.71	9.91	278.04	0.110

(1) Maximum Constant Horsepower RPM is for direct coupled loads

(2) TEFC motors suitable for 2000:1 constant torque with Vector Drives or 20:1 CT with Volts/Hertz drives (all other data identical)



All performance data based on sine wave tests

Blue Max 2000:1 Constant Torque Motors (all data at 460 volt)

HP	FL RPM	MIN. RPM	ENCL	NEMA FRAME	FL AMPS 460V	NL AMPS 460V	FL TORQUE (LB-FT)	BD TORQUE (LB-FT)	MAX CHP RPM ⁽¹⁾	FL EFFICIENCY	FL POWER FACTOR	OHMS/PHASE - Equivalent Wye Circuit (at rated operating temp. in a 40 C ambient)					ROTOR INERTIA (LB-FT ²)
												R1	R2	X1	X2	XM	
1	1756	0	TENV	143TC	1.5	0.85	3	14	3520	85.5	72	8.094	5.481	11.644	10.366	301.04	0.100
	1.5	1750	0	TENV	145TC	2.3	1.5	4.5	24	3500	82.5	72	6.294	4.498	7.277	7.088	185.409
2	1750	0	TENV	145TC	3	1.7	6	28.5	3525	85.5	78	3.834	2.897	5.949	5.637	154.78	0.130
	3	1760	0	TENV	182TC	4	2	9	35	3525	90.2	80	2.353	1.616	5.084	7.9	130.41
5	1750	0	TENV	184TC	6.7	3.5	15	61	3490	88.5	79	1.69	1.168	3.255	4.791	77.679	0.450
	7.5	1765	0 ⁽²⁾	TEFC	213TC	9.7	4.2	22.5	89	3525	88.5	81	0.786	0.669	2.51	3.893	63.88
		1775	0	TENV	213TC	10.5	5.8	22.2	94	3540	90.2	75	0.575	0.461	1.943	2.986	43.848
10	1765	0 ⁽²⁾	TEFC	215TC	12.7	5.5	29.8	75	2660	90.2	81	0.536	0.446	2.031	3.081	48.422	1.100
	1775	0	TENV	215TC	13	6.5	29.5	119	3460	91	78	0.395	0.361	1.477	2.425	36.92	1.400
15	1765	0 ⁽²⁾	TEFC	254TC	18.5	7	44.5	108	2635	90.2	83.5	0.429	0.306	1.446	1.875	35.154	2.200
	1772	0	TENV	254TC	20.2	11.8	44.5	180	3565	93	74.5	0.299	0.236	1.04	1.414	22.548	2.500
	1170	0	TEBC	284TC	20	9	67	178	1765	88.5	79	0.496	0.405	1.656	1.516	28.38	2.600
20	1775	0 ⁽²⁾	TEFC	256TC	26	14	59	195	2670	91	78	0.226	0.163	0.811	0.436	19.028	2.600
	1768	0	TENV	256TC	25	13.5	59.5	290	2665	93.6	80	0.234	0.213	0.746	0.689	18.204	3.100
	1160	0	TEBC	286TC	26.2	11	90	215	1755	87.5	82	0.382	0.339	1.342	1.274	24.85	3.000
25	1765	0 ⁽²⁾	TEFC	284T	31.5	14	74.5	195	2650	91.7	82	0.227	0.178	0.807	1.1	18.6	2.500
	1765	0	TEBC	284TC	31.5	14	74.5	195	2650	91.7	82	0.227	0.178	0.807	1.098	18.58	2.600
	1170	0	TEBC	324TC	33.5	16.5	112	280	1760	91.7	76	0.855	0.545	2.13	1.48	51.404	5.000
30	1776	0 ⁽²⁾	TEFC	286T	38.5	19	88.5	285	2660	93	78.5	0.113	0.101	0.589	0.766	13.62	4.800
	1765	0	TEBC	286TC	37	15.5	89.5	240	2655	91	83	0.193	0.152	0.679	0.984	17.123	3.000
	1170	0	TEBC	326TC	41	21.5	135	345	1760	91.7	75	0.171	0.167	0.853	0.759	11.07	5.500
40	1770	0 ⁽²⁾	TEFC	324T	50	20	118	320	2642	91.7	81.5	0.082	0.077	0.435	0.592	10.28	5.000
	1770	0	TEBC	324TC	50	20	118	320	2642	91.7	81.5	0.082	0.077	0.435	0.592	10.28	5.000
	1185	0	TEBC	364TC	52	26	178	490	1780	91.7	79	0.135	0.071	0.457	0.636	10.082	15.200
50	1780	0 ⁽²⁾	TEFC	326T	60.5	26.5	148	400	2675	92.4	81	0.063	0.046	0.424	0.596	10	10.000
	1765	0	TEBC	326TC	60	25	149	525	3525	93	83.5	0.088	0.092	0.437	0.358	9.662	5.500
	1180	0	TEBC	365TC	65	28.5	222	525	1775	93	78	0.09	0.069	0.438	0.586	8.686	11.500
60	1782	0 ⁽²⁾	TEFC	364T	73.5	28	177	525	2665	91.7	83	0.063	0.042	0.338	0.455	8.85	14.500
	1782	0	TEBC	364TC	74	28	177	525	2665	91.7	83	0.063	0.042	0.338	0.455	8.85	14.500
	1180	0	TEBC	404TC	71	28.5	267	850	1770	92.4	86	0.085	0.068	0.363	0.3	8.892	32.000
75	1780	0 ⁽²⁾	TEFC	365T	92	40	221	740	2665	94.1	82	0.047	0.031	0.267	0.313	6.275	16.500
	1780	0	TEBC	365TC	90	33	222	645	2685	93	84	0.054	0.038	0.299	0.42	8.203	16.000
	1185	0	TEBC	405TC	90	31	332	715	1775	94.1	83	0.058	0.036	0.321	0.452	8.332	36.000
100	1785	0 ⁽²⁾	TEFC	405T	115	38	295	900	2675	94.5	86.5	0.034	0.021	0.236	0.219	6.82	27.500
	1785	0	TEBC	405TC	115	38	295	900	2675	94.5	86.5	0.034	0.021	0.236	0.219	6.816	27.500
	1190	0	TEBC	444TC	125	56	442	1250	1780	94.1	79	0.033	0.021	0.213	0.26	4.544	60.500
125	1788	0 ⁽²⁾	TEFC	444T	143	47	367	1175	2682	94.5	87	0.024	0.01	0.202	0.128	5.4	43.500
	1785	0	TEBC	444T	138	40	367	975	2675	95.4	88.5	0.031	0.015	0.25	0.17	6.36	40.000
150	1790	0 ⁽²⁾	TEFC	445T	170	57	440	1475	2675	94.5	87.5	0.016	0.009	0.154	0.112	4.42	50.500
	1790	0	TEBC	445T	170	57	440	1475	2675	94.5	87.5	0.016	0.01	0.154	0.112	4.42	50.500
200	1790	0 ⁽²⁾	TEFC	445T	230	81	588	2260	2675	95	86	0.013	0.007	0.102	0.079	3.02	60.000
	1790	0	TEBC	445T	230	81	588	2260	2675	95	86	0.013	0.007	0.102	0.079	3.025	60.000
250	1788	0 ⁽²⁾	TEFC	449T	280	85	735	2425	2670	95	89	0.009	0.006	0.093	0.077	2.998	73.500
	1790	0	TEBC	449T	295	103	734	2065	2685	95	84	0.008	0.03	0.083	0.108	2.565	76.000
300	1788	0 ⁽²⁾	TEFC	449T	330	95	880	2925	2675	95.4	89.5	0.007	0.006	0.077	0.063	2.741	87.500
	1785	0	TEBC	449T	327	85	883	2475	2675	95.4	90	0.009	0.007	0.092	0.075	3.087	80.500
350	1784	0	TEBC	449T	385	95	1030	2925	2680	95.4	90	0.007	0.005	0.076	0.655	2.636	87.500

(1) Maximum Constant Horsepower RPM is for direct coupled loads

(2) TEFC motors suitable for 2000:1 constant torque with Vector Drives or 20:1 CT with Volts/Hz drives (all other data identical)

This page intentionally left blank

Motor Warranty

Yaskawa Motor Warranty Administration

Motors listed in this catalog are built by Marathon Electric Mfg. Corp. and carry a Yaskawa nameplate. Marathon Electric is responsible for warranty of these products.

Standard Warranty Period – Marathon Electric warrants Fractional and Integral motors to be free from defects in materials and workmanship and to conform to Marathon/Yaskawa written Specifications.

Dripproof, Totally Enclosed, PowerWash XT Motors – 12 months from date of first use or 18 months from date of manufacture, whichever period shall expire first.

MicroMax, Black Max, Blue Max, and Blue Chip XRI – 36 months from date of first use or 42 months from date of manufacture, whichever period shall expire first.

Warranty Repairs – Marathon Electric maintains a relationship with independent “Authorized Service Stations” worldwide. These organizations have demonstrated their knowledge and skills in the proper service of products manufactured By Marathon Electric for Yaskawa Electric. These factory “Authorized Service Stations” are the preferred local service outlets should service assistance or repair be required on Yaskawa motors built by Marathon Electric. A list of authorized service stations can be found in Marathon Electric Bulletin SB112L or at www.marathonelectric.com.

Authorized Service Stations are familiar with Marathon Electric products and procedures. Information they require is sent directly to them. Should the need arise for special information or assistance, they have a direct line of communication with the factory service department.

In most cases Authorized Service Stations can provide repairs under Marathon’s warranty. If the product is within the published warranty guidelines and you believe the failure is warrantable – PLEASE INFORM THE AUTHORIZED SERVICE STATION AT THE TIME OF INITIAL CONTACT! Because the Authorized Service Station is required to follow warranty procedures, you may be asked, before they proceed with the repair, to provide details regarding the installation and failure – such as date purchased, date installed, date failed, hours in service, type of driven equipment, protective devices used, etc. If proper warranty procedures are not followed, it may not be possible to file or delay a warranty claim.

Factory Service Department – In some cases it may become necessary to return product to the point of manufacture for failure analysis and correction. The Authorized Service Station will assist with this process. They will contact Marathon directly if factory involvement is necessary.

Inverter Duty Motors Catalog

Data subject to change without notice.



Yaskawa Electric America, Inc.
2121 Norman Drive South
Waukegan, IL 60085

800-YASKAWA (927-5292) Fax: 847-887-7310
DrivesHelpDesk@yaskawa.com www.yaskawa.com